



Before using this Vibratory Forward Plate Compactors, study and understand the entire Owner's Manual.

Serial Number \_\_\_\_\_



**EFPC60W**

**EFPC70W**

**EFPC90C**

**Vibratory Forward  
Plate Compactors  
Owner's Manual**



**Vibratory Forward  
Plate Compactors**  
EZG MANUFACTURING  
1-800-417-9272

EZG Manufacturing  
405 Watertown Road  
Waterford, Ohio 45786  
(740) 749-3512 or 1-800-417-9272  
Fax (740) 962-2037 [www.ezgmfg.com](http://www.ezgmfg.com)

# TABLE OF CONTENTS

INTRODUCTION.....	3
ABOUT THIS MANUAL.....	3
GENERAL INFORMATION.....	3
SAFETY INFORMATION.....	3
SAFETY PRECAUTIONS.....	4-5
CALIFORNIA PROPOSITION 65 WARNING.....	6
MACHINE DESCRIPTION.....	6
PRE-START CHECKS.....	7
START & STOP PROCEDURE.....	7
OPERATION.....	8
SERVICE & MAINTENANCE.....	8
AIR CLEANER.....	9
ENGINE OIL.....	10
CARBURETOR ADJUSTMENT.....	10
DRIVE BELT.....	11
EXCITER LUBRICATION.....	11
CLEANING PLATE COMPACTOR.....	12
TRANSPORTATION AND STORAGE.....	12
WARNING LABELS AND LOCATIONS.....	13
MAINFRAME ASSEMBLY-EFPC60W.....	14-15
EXCITER HOUSING ASSEMBLY-EFPC60W.....	16
EXCITER HOUSING ASSEMBLY-EFPC70W.....	17
MAINFRAME ASSEMBLY-EFPC70W.....	18-19
MAINFRAME ASSEMBLY-EFPC90C.....	20-21
NOTES / SERVICE RECORDS.....	22
WARRANTY.....	23
WARRANTY REGISTRATION.....	24

# INTRODUCTION

Congratulations on purchasing one of the finest pieces of construction equipment on the market today! If this is your first EZG Manufacturing product, you will not be disappointed. If you have previously owned an EZG Manufacturing product, you will find the same high quality and dependability that you have come to expect from EZG Manufacturing.

## ABOUT THIS MANUAL





The purpose of this manual is to inform the owner/employer/and the operator, how to safely operate this piece of equipment, and make them aware of any hazards. It also contains important information regarding assembly, set up, operation, and maintenance. It is the Owner/Employer's responsibility to make sure that anyone who operates this machine understands all safety warnings. If you do not understand any items in this manual, please contact the dealer where this product was purchased, or the manufacturer at the number listed throughout this manual. If you have any suggestions about how to make this manual easier to understand, contact the manufacturer. Keep this manual available for reference wherever this piece of equipment is being used and make it available to any operators.

## GENERAL INFORMATION

Illustrations in this manual may show details or components that may not be the same as your machine. Continuing improvements to the design of this machine may have caused changes that are not included in this manual. The information in this document is subject to change without notice.

## SAFETY INFORMATION

The following safety symbols and signal words will be used throughout this manual and on the product, for your safety and the safety of others, please become familiar with their meaning and heed their warnings.

	<b>This symbol, either used alone or with a signal word, is used to call your attention to instructions involving your safety and/or the safety of others. Failure to follow these instructions will likely result in personal injury or death.</b>
 <b>DANGER</b>	<b>This signal word is used to identify a hazard which, if not avoided, will result in death or serious injury.</b>
 <b>WARNING</b>	<b>This signal word is used to identify a hazard which, if not avoided, could result in death or serious injury.</b>
 <b>CAUTION</b>	<b>This signal word is used to identify a hazard which, if not avoided, could result in minor or moderate injury.</b>
<b>NOTICE</b>	<b>This signal word is used to identify a hazard which, if not avoided, could result in property or equipment damage. It also may be used for special instructions related to performance, maintenance or general items.</b>

# SAFETY PRECAUTIONS



## WARNING

**Failure to obey the following safety instructions could result in DEATH or SERIOUS INJURY.**

Read and understand entire manual before operating the Vibratory Forward Plate Compactor.

For your safety and the safety of others, replace any missing or damaged warning decals by contacting the manufacturer at 1-800-417-9272.

Make sure anyone operating the Vibratory Forward Plate Compactor is thoroughly familiar with its operation. Keep all unauthorized and untrained personnel, especially children, away from Vibratory Forward Plate Compactor.



Improper maintenance can be hazardous. Read and understand this section before you perform any maintenance, service or repairs.

## General Safety

- The owner of this machine must observe, and also train the user of the machine to observe, the effective labour protection laws in the country of application.
- Use suitable lifting equipment to lift the machine.
- This machine is to be used for its intended application only.
- This machine must only be operated by well-trained personnel.
- Personal Protective Equipment (PPE) must be worn by the operator whenever the equipment is being used.
- The machine must be operated on ground where stability is guaranteed. When working near the rim of excavated trenches, keep a sensible distance from the edge so that there is no danger of the machine falling down or the trench collapsing.
- Cordon off the work area and keep members of the public and unauthorised personnel at a safe distance.
- Make sure you know how to safely switch this machine OFF before you switch it ON in case you run into any difficulties.
- Always switch OFF the engine before servicing it.
- During use, the engine becomes very hot. Always allow the engine to cool down before touching it.
- Never leave the engine running and unattended.
- Never remove or tamper with any fitted guards; they are there for your own protection. If they are damaged or missing, DO NOT USE THE MACHINE until the guard has been replaced or repaired.
- Always switch OFF the engine before transporting it, moving it around site or servicing it.
- Do not operate the machine when you are ill, feeling tired or when under the influence of alcohol or drugs.
- If the surface to be compacted is on a slope, take great care when controlling the Vibratory Forward Plate Compactor's direction of travel. Always work up and down a slope; not across.
- This machine is designed to eliminate the possible risks arising from the use of it. However, risks DO reside, and these residual risks are not clearly recognisable and may cause personal injury or property damage, and possibly death. If such unpredictable and unrecognisable risks become apparent, the machine must be stopped immediately, and operator or his supervisor must take appropriate measure to eliminate such risks. It is sometimes necessary that the manufacturer must be informed of such event for future counter measuring.

# SAFETY PRECAUTIONS



## WARNINGS (*continued*)

### Fuel Safety



Fuel is flammable. It may cause injury and property damage. Shut down the engine, extinguish all open flames and do not smoke while filling the fuel tank. Always wipe up any spilled fuel.

- Before re-fuelling, switch off the engine and allow it to cool.
- When re-fuelling, use a proper funnel, and avoid spilling over the engine.
- When re-fuelling, DO NOT smoke or allow naked flames in the area.
- Spilt fuel must be made safe immediately by using sand. If fuel is spilt on your clothes, change them.
- Store fuel in an approved, purpose made container away from heat and sources of ignition.

### Health & Safety

#### Vibration

Some vibration from the compacting operation is transmitted through the handle to the operator's hands. Ensure operator rotation and do not exceed the maximum recommended usage times.

#### Dust

The compaction process can produce dust, which may be hazardous to your health. Always wear a mask that is suited to the type of dust being produced.

#### Fuel

Do not ingest fuel or inhale fuel vapors and avoid contact with your skin. Wash fuel splashes immediately. If you get fuel in your eyes, irrigate with copious amounts of water and seek medical attention as soon as possible.

#### Exhaust Fumes



The exhaust fumes produced by this machine are highly toxic and can kill!

Do not operate the Vibratory Forward Plate Compactor indoors or in confined spaces. Make sure the work area is adequately ventilated.

## California - Proposition 65 Warning

Engine exhaust and some of its constituents, and some dust created by power sanding, sawing, grinding, drilling, and other construction activities contains chemicals known to the State of California to cause cancer, birth defects and other reproductive harm. Some examples of these chemicals are:

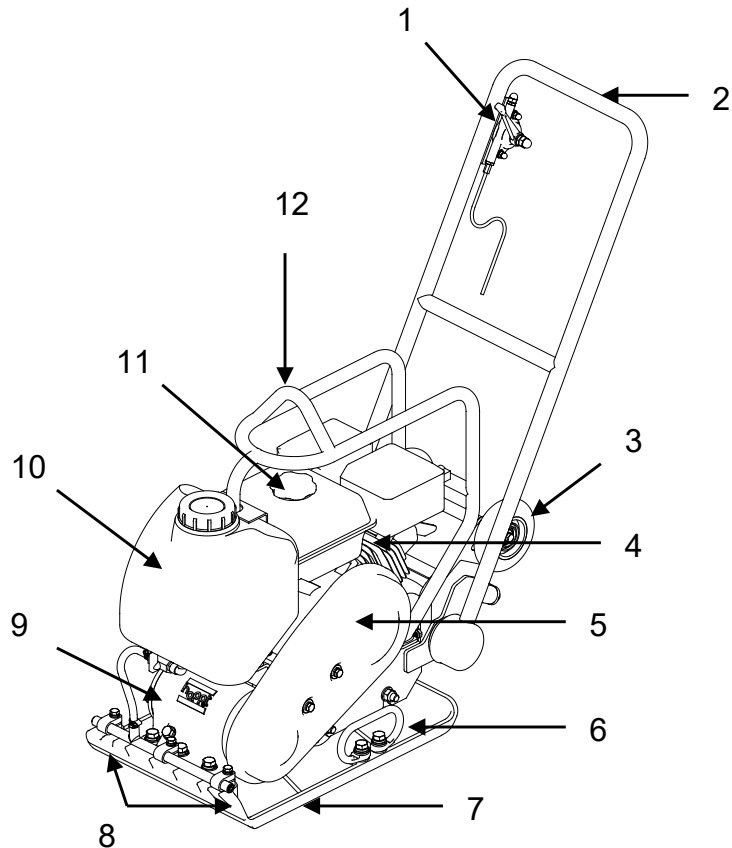
Lead from lead based paints - Crystalline silica from bricks -Cement and other masonry products -Arsenic and chromium from chemically treated lumber

Your risk from these exposures varies, depending on how often you do this type of work. To reduce your exposure to these chemicals: ALWAYS work in a well ventilated area, and work with approved safety equipment, such as dust masks that are specially designed to filter out microscopic particles.

## MACHINE DESCRIPTION

The Vibratory Forward Plate Compactor is designed for compacting loose, granular soils, gravel, paving stones and asphalt. It is intended to be used in confined areas and areas next to structures such as walls, curbs, and foundations. Plate Compactors with water tanks can be used for compacting asphalt. The Plate Compactor is not recommended for the compaction of cohesive soils with heavy clay content. For cohesive soil, use a Tamping Rammer.

1. Throttle
2. Operating Handle
3. Wheels
4. Engine
5. Belt Guard
6. Lifting Handle
7. Base Plate
8. Water Sprinkler
9. Exciter Housing
10. Water tank
11. Fuel Tank
12. Lifting Hook



## PRE-START CHECKS

The following pre-start checks must be performed before the start of each work session or after every four hours of use, whichever is first. Please refer to the Service and Maintenance section for detailed guidance. If any fault is discovered, the Vibratory Forward Plate Compactor must not be used until the fault is rectified.

1. Thoroughly inspect the machine for signs of damage, Make sure all guards are in place and secured. Check for loose bolts and nuts, retighten if necessary.
2. Check hoses, filler openings, drain plugs and other areas for signs of leakage. Fix any leaks before operating.
3. Check the engine oil level and top up as necessary. Use proper engine oil with the proper viscosity (SAE 10W-30 is recommended).
4. Check the engine fuel level and top up as necessary. Use clean fuel. The use of contaminated fuel may damage the fuel system.
5. Check the air filter is clean. Excessive dirt/dust accumulation within the filter element will cause erratic engine operation. Clean the air filter element when it is contaminated (refer to the Service and Maintenance section).
6. Check for fuel and oil leaks.

## START/STOP PROCEDURE

Before starting the engine, make sure that the Safety Switch is in the ON position and the Throttle Lever is set to the idle position.

1. Take the Vibratory Forward Plate Compactor to where it is required. Use suitable lifting equipment to position the Vibratory Forward Plate Compactor where it is necessary. Make sure the lifting equipment has a WLL (Working Load Limit) suitable for the Vibratory Forward Plate Compactor weight. Attach suitable slings or chains only to the lifting point.
2. Never leave the engine running during transporting, even if it is for a short period of time.
3. Having carried out the checks listed in the 'pre-start' section, you may start the engine. EZG Vibratory Forward Plate Compactors are fitted with a centrifugal clutch which allows the engine to run at idle speed without engaging the exciter and driving the Vibratory Forward Plate Compactor. The Centrifugal clutch will be engaged as the speed of engine is increased. For correct operation, the engine speed should be set to maximum, full-open position.

### **Before Starting Gasoline Engine**

4. Check the oil in the engine crankcase. Be sure to maintain the proper level per the engine manufacturer specifications. If the oil is dirty and in need of changing, follow the Engine User Manual instructions.
5. Check the fuel supply. Refer to Engine User Manual.

## OPERATIONS

1. Run the engine at full throttle and allow the Plate Compactor to pull itself along at its normal speed.
2. When operating on an incline it may be necessary to assist the Plate Compactor by pushing it forward slightly.
3. When operating downhill hold the Plate Compactor back slightly, if it begins to pick up speed.
4. Depending on the material being compacted, 3 or 4 passes are recommended to achieve the best compaction.
5. While a certain amount of moisture in the soil is necessary, excessive moisture may cause soil particles to stick together and prevent good compaction.
6. If soil is extremely wet, allow it to dry somewhat before compacting.
7. If soil is so dry as to create dust clouds while operating Plate Compactor, some moisture should be added to the ground material to improve compaction. This will also reduce service to the air filter.
8. When using the Plate Compactor on paving stones, attach a pad to the bottom of the plate to prevent chipping or grinding surface of stones.



**Do not operate the plate on concrete or on extremely hard, dry, compacted surfaces. The plate will jump rather than vibrate and could damage both the plate and the engine.**

## SERVICE & MAINTENANCE

The EZG Vibratory Forward Plate Compactors are designed to give many years of trouble free operation. It is, however, important that the simple regular maintenance listed in this section is carried out. It is recommended that an approved EZG dealer carry out all major maintenance and repairs. Always use genuine EZG replacement parts, the use of spurious parts may void your warranty. Before any maintenance is carried out on the machine, switch off the engine and disconnect the HT lead from the spark plug. Always set the machine on level ground to ensure any fluid levels will be correctly read. Only use recommended oils.



# AIR CLEANER

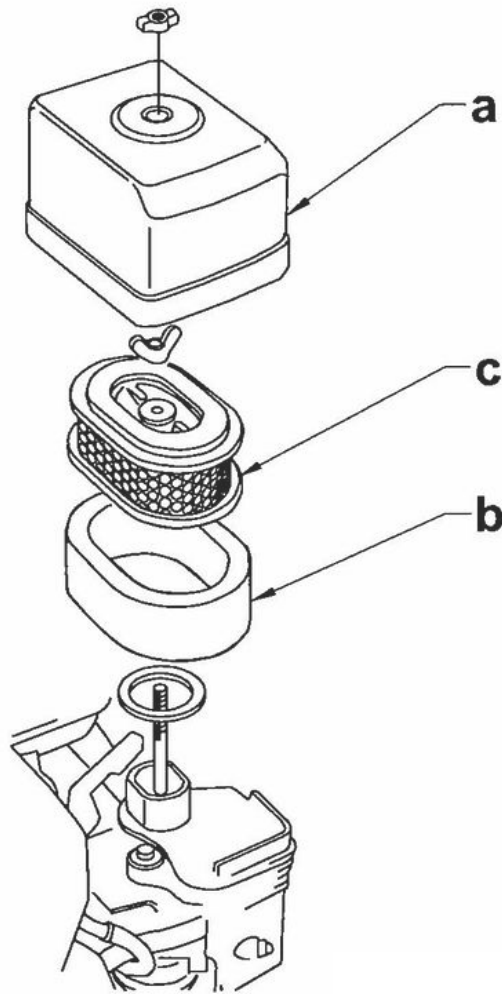
The engine is equipped with a dual element air cleaner. Air cleaner must be serviced regularly to prevent carburetor failure.



**Never run the engine without the air cleaner. Severe engine damage will occur.**

## SERVICE (FIGURE 1)

1. Remove air cleaner cover (a). Remove both elements and inspect them for holes or tears. Replace damaged elements.
2. Wash foam element (b) in solution of mild detergent and warm water. Rinse thoroughly in clean water. Allow element to dry thoroughly. Soak element in clean engine oil and squeeze out excess oil.
3. Tap paper element (c) lightly to remove excess dirt. Replace paper element if it appears heavily soiled.



**FIGURE 1**

# ENGINE OIL

## SERVICE (FIGURE 2)

1. Drain oil while engine is still warm.
2. Remove the oil fill plug (a) and drain plug (b) to drain oil.  
**Note:** In the interests of environmental protection, place a plastic sheet and a container under the machine to collect any liquid which drains off. Dispose of this liquid in accordance with environmental protection legislation.
3. Install drain plug.
4. Fill the engine crankcase with recommended oil up to the level of the plug opening (c). See engine user manual for oil type and quantity.
5. Refit the oil filler plug.

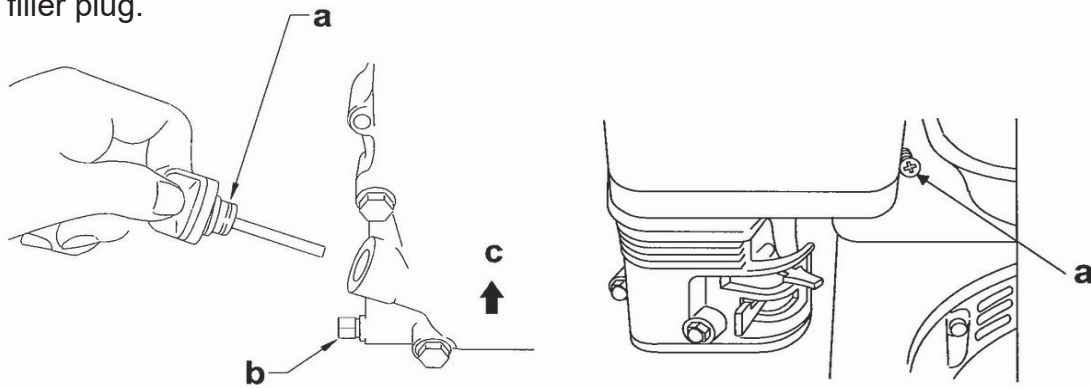


FIGURE 2

# CARBURETOR ADJUSTMENT

## SERVICE (FIGURE 3)

1. Start the engine and allow it to warm up to operating temperature.
2. Set the pilot screw (a) 2 turns out. See note.
3. With the engine idling, turn the pilot screw (a) in or out to the setting that produces the highest rpm.
4. After the pilot screw is adjusted, turn the throttle stop screw (b) to obtain the standard idle speed.

**Note:** On some engines the pilot screw is fitted with a limiter cap (c) to prevent excessive enrichment of the air-fuel mixture in order to comply with emissions regulations. The mixture is set at the factory and no adjustments should be necessary. Do not attempt to remove the limiter cap. The limiter cap cannot be removed without breaking pilot screw.

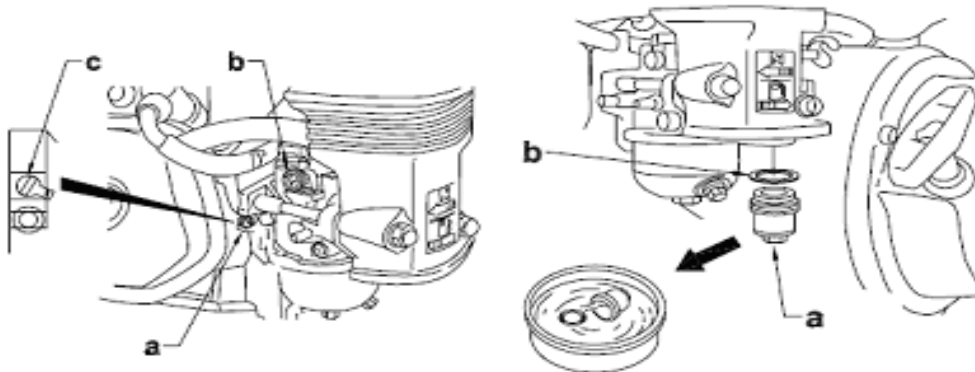


FIGURE 3

# DRIVE BELT

On new machines or after installing a new belt, check the belt tension after first 20 hours of operation. Check and adjust the belt every 50 hours thereafter.

## To Adjust the Belt:

1. Loosen the 2 screws on the belt guard (4 screws on box type), then remove the belt guard, keeping the screw assemblies captured on the belt guard.
2. Loosen the 4 nuts which hold the engine to the engine mounting plate and the belt screw.
3. Slide the engine backward (towards the handle) to tighten the belt, forward to loosen the belt.
4. Adjust the belt so that it deflects 1/2 inch (10–15mm) when pressed midway between the belt pulleys.
5. Then tighten the belt screw which prevents the engine from sliding forward.
6. Make sure the clutch pulley and the exciter pulley are in alignment. Place a straight edge against the exciter pulley and move the engine so that the two pulleys are parallel.
7. Retighten all nuts and screws to secure

# EXCITER LUBRICATION

The bearings in the exciter assembly are splash lubricated and rotate at very high speed. It is crucial to maintain the exciter oil at the correct level and change it regularly. Check exciter oil level every 50 hours of operation. (Use SAE-30W)

## To Check Oil Level:

1. Place plate on a flat level surface
2. Remove the oil Filter Plug

## CLEANING PLATE COMPACTOR

Clean plate after use to remove dirt, stones, and mud caught under the engine console. If plate is being used in a dusty area, check engine cylinder cooling fins for heavy dirt accumulation. Keep engine cylinder fins clean to prevent engine from overheating. You may use an air gun to blow away excessive dirt.

## TRANSPORTATION AND STORAGE

For long-term storage, empty the fuel in the carburetor by running the engine with the fuel tap being closed.

The chemical composition of the fuel will deteriorate after prolonged storage. When the machine needs to be stored for a long time, remove all the fuel from the fuel tank and the water from the water tank. Also remove the fuel from the float chamber of the carburetor by draining the fuel out from the drain plug.

Clean excessive dirt accumulated on the Plate Compactor. Cover the machine and store it in a dry place.



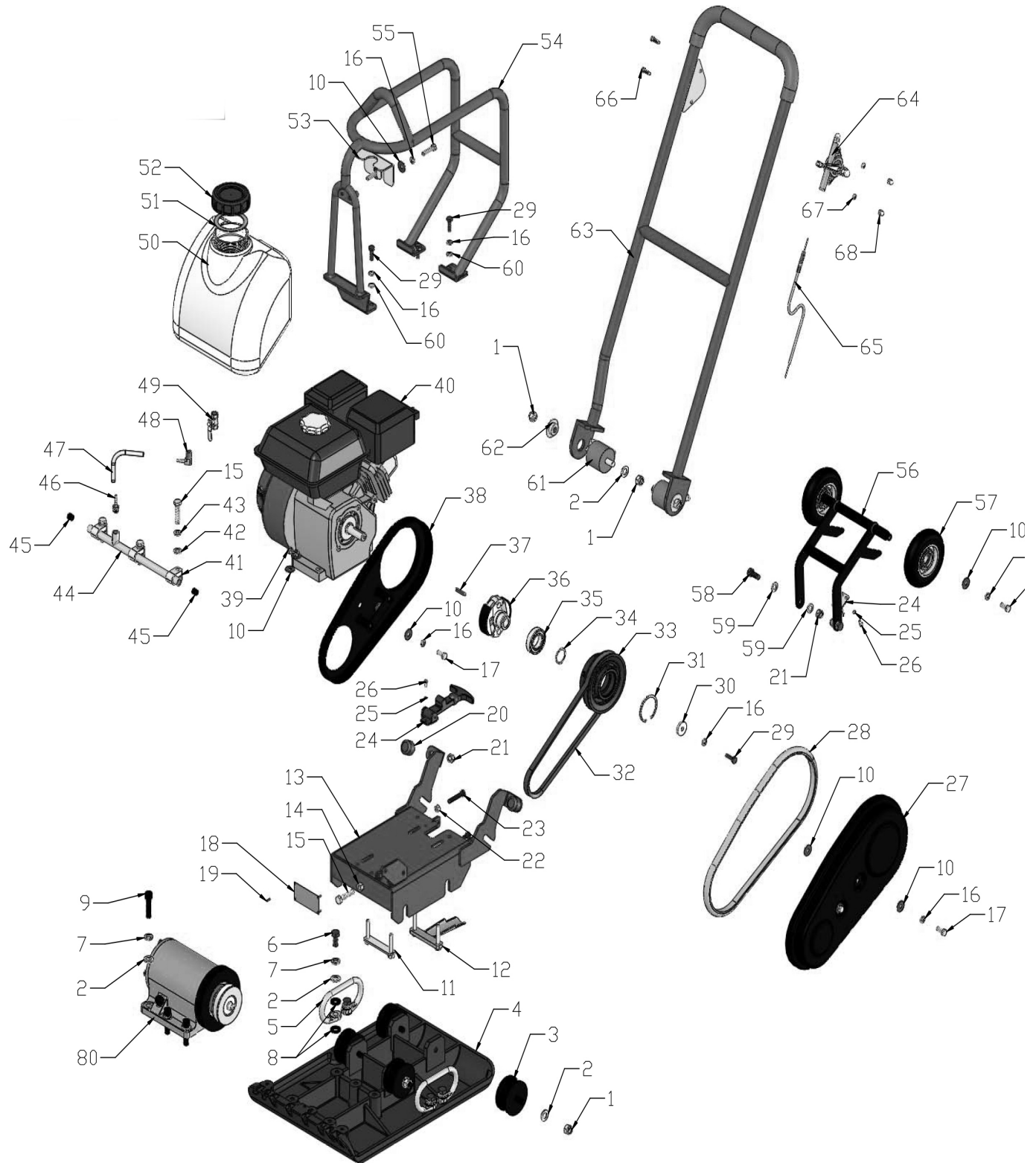
**Extreme care must be taken when loading or unloading this machine.**

Always use the lifting hook for hoisting purposes. Use proper hoisting equipment and techniques.

Be certain the area surrounding the machine is clear of personnel before hoisting. Always hoist the machine high enough to transport.



# MAIN FRAME ASSEMBLY - EFPC60W



## VIBRATORY FORWARD PLATE COMPACTOR [EFPC60W] MAIN FRAME ASSEMBLY

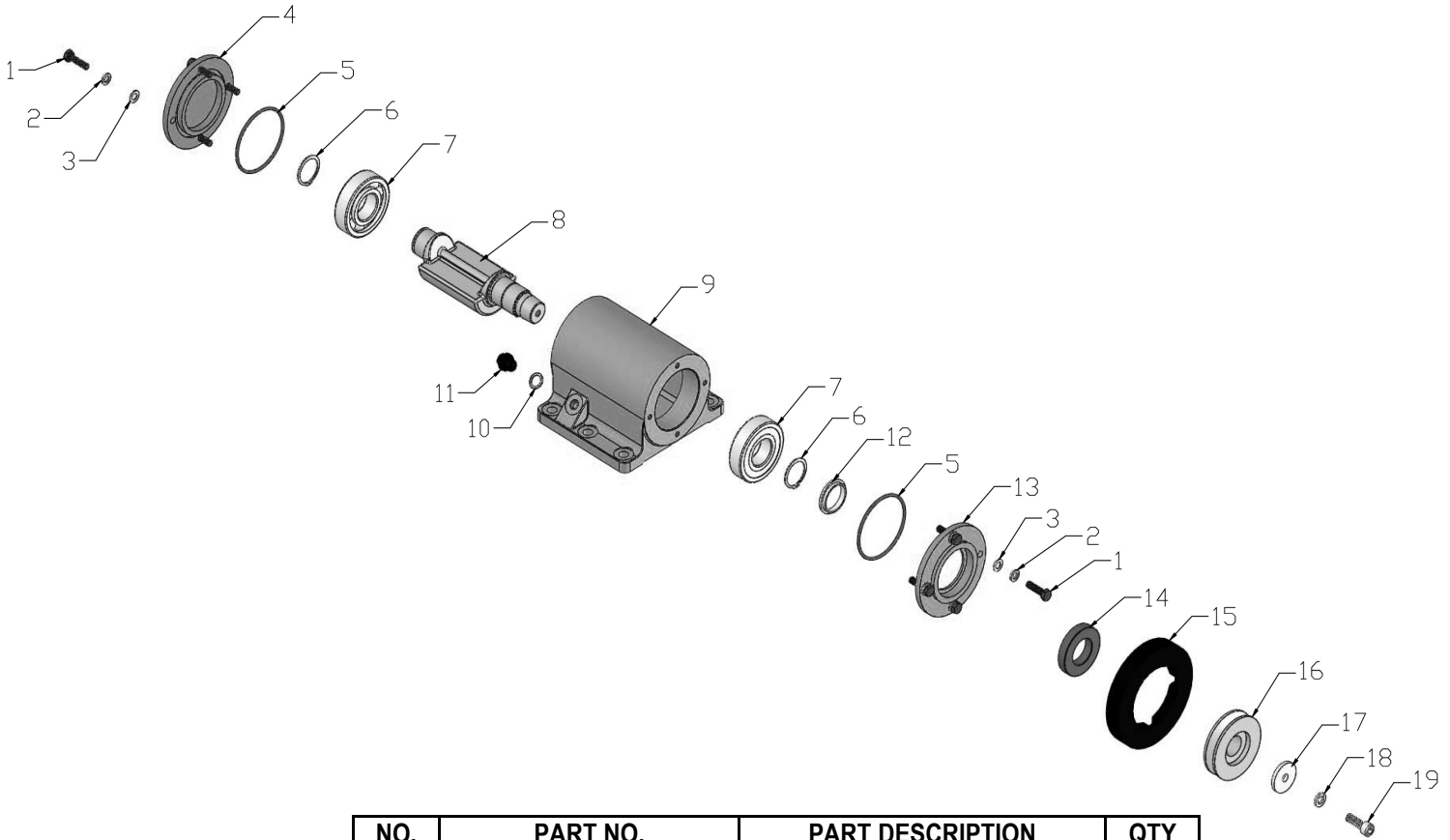
# MAIN FRAME ASSEMBLY

NO.	PART NO.	PART DESCRIPTION	QTY
01-1	IN.N-M12-DIN-1	LOCK NUT	8
01-2	FN.W12-DIN-1	WASHER	16
01-3	60III-060100	CUSHION	4
01-4	60W-010100S	BASE PLATE	1
01-5	90P-010100	HANDLE	2
01-6	FN.B-M12x25-8.8-DIN-1	BOLT	4
01-7	HSPG.W12-DIN-1	SPRING WASHER, TANG ENDS	10
01-8	90P-010600	RUBBER WASHER	8
01-9	HS.B-M12x45-12.9-GB-3	SCREW	6
01-10	WOD.W8-GB-1	WASHER	14
01-11	60-060200	BOLT	1
01-12	90P-031000	FIX ENGINE BOLT	1
01-13	60W-020100	ENGINE BASE	1
01-14	FN.N-M10-DIN-1	NUT	1
01-15	FN.B-M10x45-8.8-DIN-1	BOLT	4
01-16	HSPG.W8-DIN-1	SPRING WASHER, TANG ENDS	13
01-17	FN.B-M8x20-8.8-DIN-1	BOLT	6
01-18	80-0409	NAMEPLATE	1
01-19	K.RVT-3.2x11	RIVET	4
01-20	80-0408	CUSHION	2
01-21	IN.N-M10-DIN-1	LOCK NUT	4
01-22	FN.N-M8-DIN-1	NUT	2
01-23	FN.B-M8x45-8.8-DIN-1	BOLT	2
01-24	ROL500S-010505	BUCKLE	1
01-25	SPG.W5-DIN-1	SPRING WASHER	4
01-26	FN.B-M5x10-8.8-DIN-1	BOLT	4
01-27	60W-060200	OUTER BELT GUARD	1
01-28	60W-060300	SEAL	1
01-29	FN.B-M8x25-8.8-DIN-1	BOLT	5
01-30	80-0319	WASHER	1
01-31	CH.RG55	INTERNAL CIRCLIP	1
01-32	W02-A31	V-BELT	1
01-33	90P-031800	CLUTCH PULLEY	1
01-34	CS.RG30	EXTERNAL CIRCLIP	1
01-35	W01-6006ZZ-G	BEARING	1

NO.	PART NO.	PART DESCRIPTION	QTY
01-35	W01-6006ZZ-G	BEARING	1
01-36	80-0500A	CENTRIFUGAL CLUTCH	1
01-37	Key.C-5x5x32	KEY	1
01-38	60W-060100	INNER BELT GUARD	1
01-39	IN.N-M8-DIN-1	LOCK NUT	4
01-40	W05-GX160UT1-SWX2	ENGINE	1
01-41	90P-010901	HOOP	3
01-42	FN.W10-DIN-1	WASHER	3
01-43	HSPG.W10-DIN-1	SPRING WASHER, TANG ENDS	3
01-44	60W-010800	SPRINKLING PIPE	1
01-45	HSHOS.B-ZG1-4	HEXAGONAL SOCKET HEAD PLUG	2
01-46	CPT-BT-1/4-6	HOSE NIPPLE	1
01-47	SLSG-9*1.5	HOSE	0.3M
01-48	CPT-BT-1/4-6-90°	HOSE NIPPLE	1
01-49	CPT-QF-1/4	VALVE	1
01-50	90P-070000	WATER TANK	1
01-51	ROL6.5-070109	SEAL, WATER TANK COVER	1
01-52	ROL6.5-070108	WATER TANK CAP	1
01-53	90P-050300	WATER TANK CLIP	1
01-54	60W-050100	WATER TANK FRAME	1
01-55	FN.B-M8x35-8.8-DIN-1	BOLT	2
01-56	60W-040100	WHEEL FRAME	1
01-57	60W-040200	WHEEL	2
01-58	FN.B-M10x25-8.8-DIN-1	BOLT	2
01-59	FN.W10-DIN-1	WASHER	4
01-60	FN.W8-DIN-1	WASHER	4
01-61	90B-030100	HANDRAIL ABSORBER	2
01-62	60W-010300.3	NYLON WASHER	2
01-63	60W-030100	HANDRAIL	1
01-64	RAM70ND-010018	THROTTLE LEVER ASSY	1
01-65	W06-S04-L800x1000	THROTTLE CABLE	1
01-66	FN.B-M6x20-8.8-DIN-2	BOLT	2
01-67	HSPG.W6-DIN-2	SPRING WASHER, TANG ENDS	3
01-68	HC.N-M6-DIN-2	CAP NUT	2
01-80	2	EXCITER HOUSING ASSY	1set

## VIBRATORY FORWARD PLATE COMPACTOR [EFPC60W] MAIN FRAME ASSEMBLY

# EXCITER HOUSING ASSEMBLY - EFPC60W

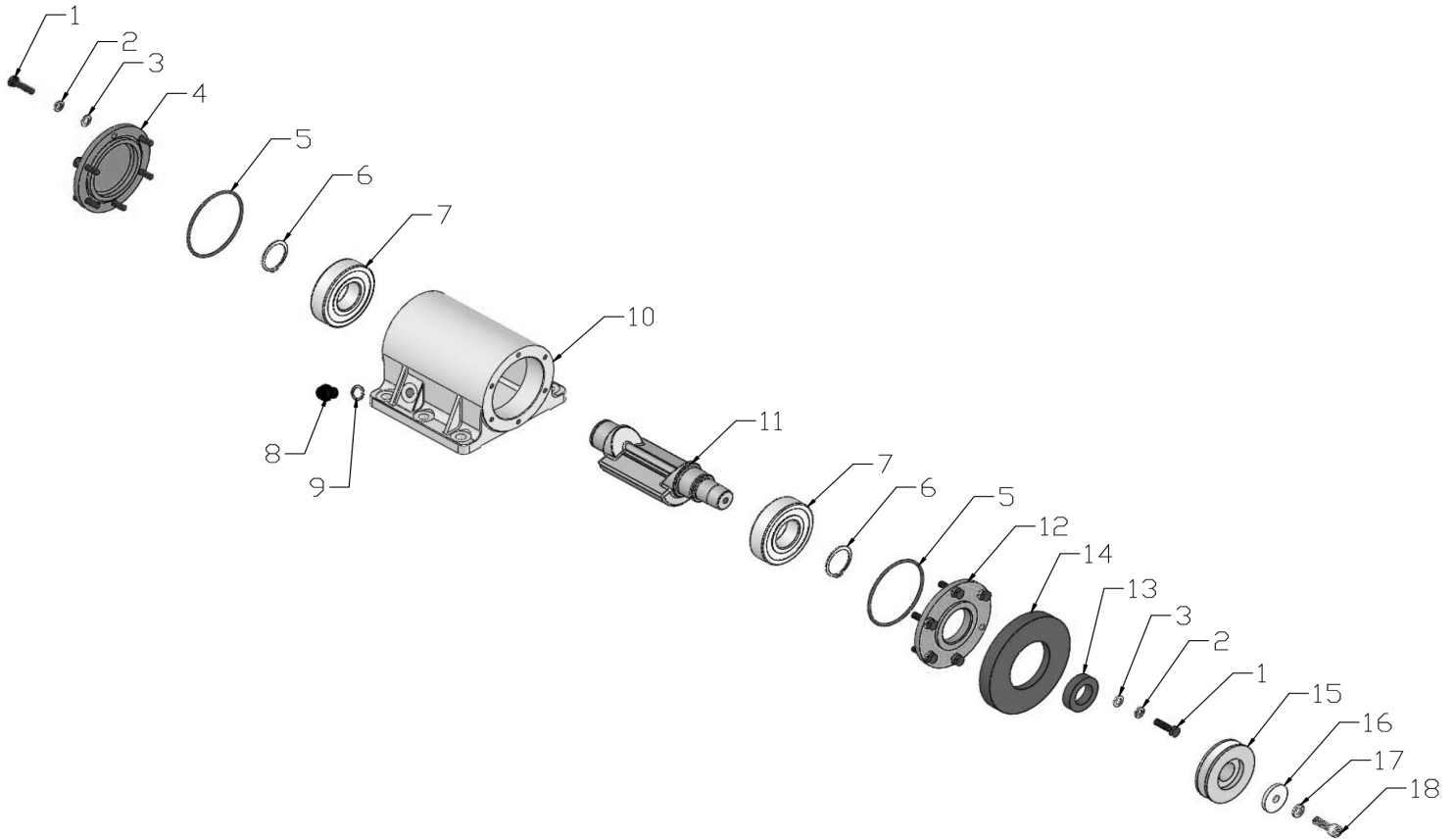


NO.	PART NO.	PART DESCRIPTION	QTY
02-1	FN.B-M8x30-8.8-DIN-1	BOLT	8
02-2	HSPG.W8-DIN-1	SPRING WASHER,TANG ENDS	8
02-3	FN.W8-DIN-1	WASHER	8
02-4	60-010400	CLOSE COVER	1
02-5	W04-80x3.5	O RING	2
02-6	CS.RG35	EXTERNAL CIRCLIP	2
02-7	W01-6307Z-J	BEARING	2
02-8	60W-010200E	EXCITER SHAFT	1
02-9	60-010200	EXCITER HOUSING	1
02-10	GB97.1-M14	CUPRUM WASHER	1
02-11	HHOS.B-M14x1.5	HEXAGON HEAD PLUG	1
02-12	60-010700	BUSH	1
02-13	60-010300	COVER	1
02-14	W03-65x35x12	OIL SEAL	1
02-15	60III-010500	COVER GUARD	1
02-16	40-060200	EXCITER PULLEY	1
02-17	60-060301	WASHER	1
02-18	HSPG.W10-DIN-1	SPRING WASHER,TANG ENDS	1
02-19	90B-010800	VENT SCREW	1

## VIBRATORY FORWARD PLATE COMPACTOR [EFPC60W] EXCITER HOUSING ASSEMBLY



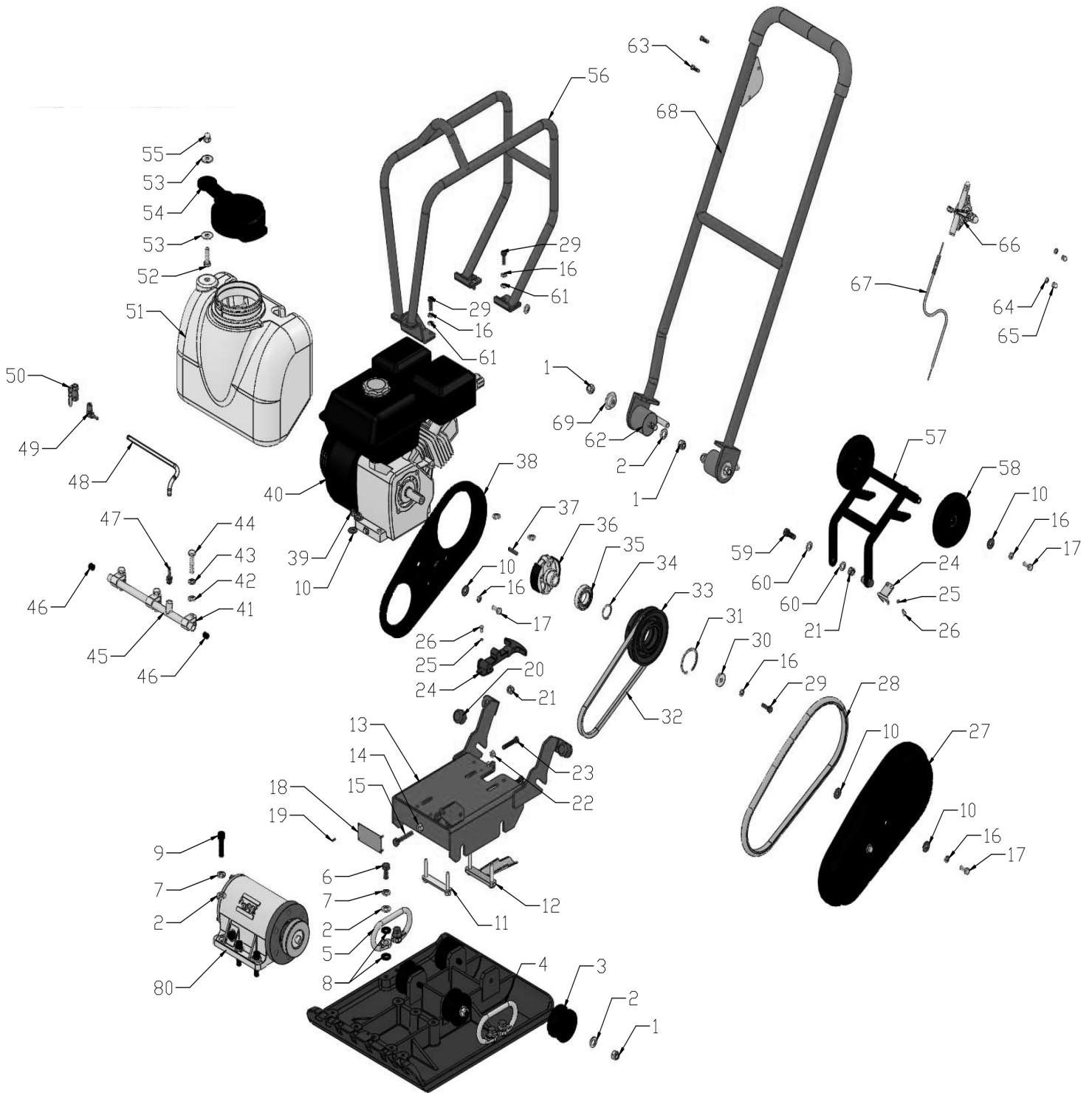
# EXCITER HOUSING ASSEMBLY - EFPC70W



NO.	PART NO.	PART DESCRIPTION	QTY
02-1	FN.B-M8x30-8.8-DIN-1	BOLT	12
02-2	HSPG.W8-DIN-1	SPRING WASHER,TANG ENDS	12
02-3	FN.W8-DIN-1	WASHER	12
02-4	90P-020400	CLOSE COVER	1
02-5	W04-90x3.5	O RING	2
02-6	CS.RG40	EXTERNAL CIRCLIP	2
02-7	W01-6308ZZC3-J	BEARING	2
02-8	HHOS.B-M14x1.5	HEXAGON HEAD PLUG	1
02-9	GB97.1-M14	CUPRUM WASHER	1
02-10	70W-010100	EXCITER HOUSING	1
02-11	70W-010200E	EXCITER SHAFT	1
02-12	90P-020300	COVER	1
02-13	W03-50x30x12	OIL SEAL	1
02-14	90P-020500	COVER GUARD	1
02-15	40-060200	EXCITER PULLEY	1
02-16	80-0303	WASHER	1
02-17	HSPG.W10-DIN-1	SPRING WASHER,TANG ENDS	1
02-18	90B-010800	VENT SCREW	1

## VIBRATORY FORWARD PLATE COMPACTOR [EFPC70W] EXCITER HOUSE ASSEMBLY

# MAIN FRAME ASSEMBLY - EFPC70W



## VIBRATORY FORWARD PLATE COMPACTOR [EFPC70W] MAIN FRAME ASSEMBLY

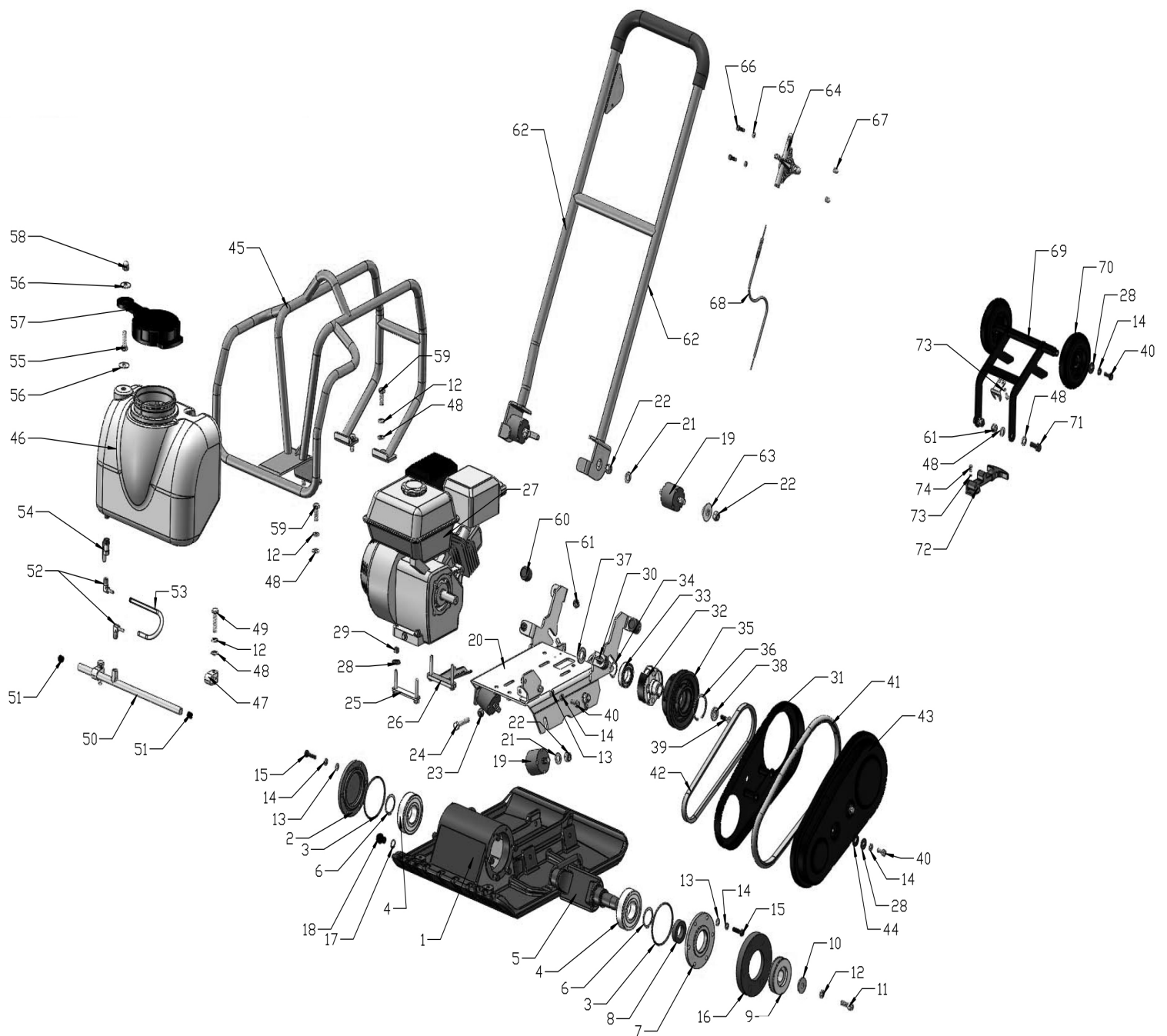
# MAIN FRAME ASSEMBLY - EFPC70W

NO.	PART NO.	PART DESCRIPTION	QTY
01-1	IN.N-M12-DIN-1	LOCK NUT	6
01-2	FN.W12-DIN-1	WASHER	16
01-3	60III-060100	CUSHION	4
01-4	60W-010100	BASE PLATE	1
01-5	90P-010100	HANDLE	2
01-6	FN.B-M12x25-8.8-DIN-1	BOLT	4
01-7	HSPG.W12-DIN-1	SPRING WASHER,TANG ENDS	10
01-8	90P-010600	RUBBER WASHER	8
01-9	HS.B-M12x45-12.9-DIN-1	SCREW	6
01-10	WOD.W8-GB-1	WASHER	12
01-11	60-060200	BOLT	1
01-12	90P-031000	FIX ENGINE BOLT	1
01-13	60W-020100	ENGINE BASE	1
01-14	FN.N-M10-DIN-1	NUT	1
01-15	FN.B-M10x55-8.8-DIN-1	BOLT	1
01-16	HSPG.W8-DIN-1	SPRING WASHER,TANG ENDS	11
01-17	FN.B-M8x20-8.8-DIN-1	BOLT	6
01-18	D4-MP-E	NAMEPLATE	1
01-19	K.RVT-3.2x11	RIVET	4
01-20	80-0408	CUSHION	2
01-21	IN.N-M10-DIN-1	LOCK NUT	4
01-22	FN.N-M8-DIN-1	NUT	2
01-23	FN.B-M8x45-8.8-DIN-1	BOLT	2
01-24	500S-010505	BUCKLE	1
01-25	SPG.W5-DIN-1	SPRING WASHER	4
01-26	FN.B-M5x10-8.8-DIN-1	BOLT	4
01-27	60W-060200	OUTER BELT GUARD	1
01-28	60W-060300	SEAL	1
01-29	FN.B-M8x25-8.8-DIN-1	BOLT	5
01-30	80-0319	WASHER	1
01-31	CH.RG55	INTERNAL CIRCLIP	1
01-32	W02-A31	V-BELT	1
01-33	90P-031800	CLUTCH PULLEY	1
01-34	CS.RG30	EXTERNAL CIRCLIP	1
01-35	W01-6006ZZ-G	BEARING (轴承)	1

NO.	PART NO.	PART DESCRIPTION	QTY
01-36	80-0500A	CENTRIFUGAL CLUTCH	1
01-37	Key.C-5x5x32	KEY	1
01-38	60W-060100	INNER BELT GUARD	1
01-39	IN.N-M8-DIN-1	LOCK NUT	4
01-40	W05-GX160UT1-SWX2	ENGINE	1
01-41	90P-010901	HOOP	3
01-42	FN.W10-DIN-1	WASHER	3
01-43	HSPG.W10-DIN-1	SPRING WASHER,TANG ENDS	3
01-44	FN.B-M10x45-8.8-DIN-1	BOLT	3
01-45	60W-010800	SPRINKLING PIPE	1
01-46	HSHOS.B-ZG1-4	HEXAGONAL SOCKET HEAD PLUG	2
01-47	CPT-BT-1/4-6	HOSE NIPPLE	1
01-48	SLSG-9*1.5	HOSE	0.3M
01-49	CPT-BT-1/4-6-90°	HOSE NIPPLE	1
01-50	CPT-QF-ZG1/4	VALVE	1
01-51	90P-070000A	WATER TANK	1
01-52	FN.B-M10x35-8.8-DIN-1	BOLT	1
01-53	WOD.W10-GB-1	WASHER	2
01-54	650-070200	WATER TANK CAP	1
01-55	HC.N-M10-DIN-1	CAP NUT	1
01-56	60W-050100A	WATER TANK FRAME	1
01-57	60W-040100	WHEEL FRAME	1
01-58	60W-040200	WHEEL	2
01-59	FN.B-M10x25-8.8-DIN-1	BOLT	2
01-60	FN.W10-DIN-1	WASHER	4
01-61	FN.W8-DIN-1	WASHER	4
01-62	90B-030100	SHOCK ABSORBER	2
01-63	FN.B-M6x20-8.8-DIN-2	BOLT	2
01-64	HSPG.W6-DIN-2	SPRING WASHER,TANG ENDS	2
01-65	HC.N-M6-DIN-2	CAP NUT	2
01-66	70ND-010018	THROTTLE LEVER ASSY	1
01-67	W06-S04-L800x1000	THROTTLE CABLE	1
01-68	60W-030100	HANDRAIL	1
01-69	60W-010300.3	NYLON WASHER	2
01-80	2	EXCITER HOUSING ASSY	

## VIBRATORY FORWARD PLATE COMPACTOR [EFPC70W] MAIN FRAME ASSEMBLY

# MAIN FRAME ASSEMBLY - EFPC90C



## VIBRATORY FORWARD PLATE COMPACTOR [EFPC90C] MAIN FRAME ASSEMBLY

# MAIN FRAME ASSEMBLY - EFPC90C

NO.	PART NO.	PART DESCRIPTION	QTY
1	90C-010500	BASE PLATE	1
2	90P-020400	CLOSE COVER	1
3	W04-90x3.5	O RING	2
4	W01-6308ZZC3E-J	BEARING	2
5	90P-020200A	EXCITER SHAFT	1
6	CS.RG40	EXTERNAL CIRCLIP	2
7	90P-020300	COVER	1
8	W03-50x30x12	OIL SEAL	1
9	90P-031900	EXCITER PULLEY	1
10	80-0303	PULLEY WASHER	1
11	90B-010800	VENT SCREW	1
12	HSPG.W10-DIN-1	SPRING WASHER,TANG ENDS	7
13	FN.W8-DIN-1	WASHER	14
14	HSPG.W8-DIN-1	SPRING WASHER,TANG ENDS	18
15	FN.B-M8x30-8.8-DIN-1	BOLT	12
16	90P-020500	COVER GUARD	1
17	GB97.1-M14	CUPRUM WASHER	1
18	HHOS.B-M14x1.5	HEXAGON HEAD PLUG	1
19	90B-030100	SHOCK ABSORBER	6
20	90C-022100H	ENGINE BASE	1
21	FN.W12-DIN-1	WASHER	6
22	IN.N-M12-DIN-1	LOCK NUT	8
23	FN.N-M10-DIN-1	NUT	1
24	FN.B-M10x50-8.8-DIN-1	BOLT	1
25	60-060200	BOLT	1
26	90P-031000	FIX ENGINE BOLT	1
27	W05-GX160UT2-SWX2	ENGINE	1
28	WOD.W8-GB-1	WASHER	8
29	IN.N-M8-DIN-1	LOCK NUT	4
30	Key.C-5x5x32	KEY	1
31	60W-060100	INNER BELT GUARD	1
32	80-0500A	CENTRIFUGAL CLUTCH	1
33	W01-6006ZZ-G	BEARING	1
34	CS.RG30	EXTERNAL CIRCLIP	1
35	90P-031800	CLUTCH PULLEY	1
36	CH.RG55	INTERNAL CIRCLIP	1
37	90C-010700	WASHER	1

NO.	PART NO.	PART DESCRIPTION	QTY
38	90C-010900	WASHER	1
39	HSF.S-M8x30-8.8-DIN-1	SOCKET COUNTERSUNK HEAD SCREW	1
40	FN.B-M8x20-8.8-DIN-1	BOLT	6
41	60W-060300	SEAL	1
42	W02-A31	V-BELT	1
43	60W-060200	OUTER BELT GUARD	1
44	90P-010600	RUBBER WASHER	2
45	90C-040100	WATER TANK FRAME	1
46	90P-070000A	WATER TANK	1
47	90P-010901	HOOP	2
48	FN.W10-DIN-1	WASHER	10
49	FN.B-M10x45-8.8-DIN-1	BOLT	2
50	90C-010800	SPRINKLING PIPE	1
51	HSOS.B-ZG1-4	HEXAGONAL SOCKET HEAD PLUG	2
52	CPT-BT-1/4-6-90°	HOSE NIPPLE	2
53	SLSG-9*1.5	HOSE	0.3M
54	CPT-QF-ZG1/4	VALVE	1
55	FN.B-M10x35-8.8-DIN-1	BOLT	1
56	WOD.W10-GB-1	WASHER	2
57	ROL650-070200	WATER TANK CAP	1
58	HC.N-M10-DIN-1	CAP NUT	1
59	FN.B-M10x30-8.8-DIN-1	BOLT	4
60	80-0408	SHOCK ABSORBER	4
61	IN.N-M10-DIN-1	LOCK NUT	6
62	90C-110000	HANDRAIL	1
63	60W-010300.3	NYLON BUSH	2
64	RAM70ND-010018	THROTTLE LEVER ASSY	1
65	HSPG.W6-DIN-2	SPRING WASHER,TANG ENDS	2
66	FN.B-M6x20-8.8-DIN-2	BOLT	2
67	HC.N-M6-DIN-2	CAP NUT	2
68	W06-S04-L800x1000	THROTTLE CABLE	1
69	60W-040100	WHEEL FRAME	1
70	60W-040200	WHEEL	2
71	FN.B-M10x25-8.8-DIN-1	BOLT	2
72	ROL500S-010505	BUCKLE	1
73	SPG.W5-DIN-1	SPRING WASHER,TANG ENDS	4
74	FN.B-M5x10-8.8-DIN-1	BOLT	4

## VIBRATORY FORWARD PLATE COMPACTOR [EFPC90C] MAIN FRAME ASSEMBLY

# NOTES

---

---

---

---

---

---

---

---

---

---

---

---

---

---

---

---

---

---

---

---

---

---

---

## SERVICE RECORDS

SERVICE PERFORMED	DATE	INITIALS

# WARRANTY

## Limited Warranty

The manufacturer warrants that products manufactured shall be free from defects in material and workmanship that develop under normal use for a period of one year on all products from the date of shipment. The foregoing shall be the exclusive remedy of the buyer and the exclusive liability of the manufacturer. Our warranty excludes normal replaceable wear items, i.e. gaskets, wear parts, seals, O-rings, belts, drive chains, clutches, etc. Any equipment, part or product which is furnished by the manufacturer but manufactured by another, bears only the warranty given by such other manufacturer. (Manufacturer agrees to furnish free of charge a written description of problem or cause.) Warranty is voided by product abuse, alterations, use of equipment in applications for which it was not intended, use of non-manufacturer parts, or failure to follow documented service instructions. The foregoing warranty is exclusive of all other warranties whether written or oral, expressed or implied. No warranty of merchantability or fitness for a particular purpose shall apply. The agents, dealers, and employees of Manufacturer are not authorized to make modifications to this warranty, or additional warranties binding on the Manufacturer. Therefore, additional statements, whether oral or written, do not constitute warranty and should not be relied upon.

The Manufacturer's sole responsibility for any breach of the foregoing warranty provisions, with respect to any product or part not conforming to the Warranty or the description herein contained, is at its option (a) to repair, replace, or refund such product or parts upon the prepaid return thereof to location designated specifically by the Manufacturer. Product returns not shipped prepaid will be refused (b) as an alternative to the foregoing modes of settlement - the Manufacturer's dealer may repair defective units with reimbursement for expenses. A written description of problem or cause must accompany all warranty claims.

Except as set forth here in above and without limitation of the above, there are no warranties or other affirmation which extend beyond the description of the products on the fact here of, or as to operational efficiency, product reliability, or maintainability or compatibility with products furnished by others. In no event, whether as a result of breach of contract or warranty or alleged negligence, shall the Manufacturer, be liable for special or consequential damages including but not limited to: Loss of profits or revenue, loss of use of the product or any associated product, cost of capital, cost of substitute products, facilities or services or claims of customers. Manufacturer does not assume responsibility for any accident due to equipment modification.

No claim will be allowed for products lost or damaged in transit. Such claims should be filed with the carrier within fifteen days.

Effective July 20, 2005

EZG Manufacturing is the exclusive manufacturer of the patented Grout Hog® Grout Delivery System the Mud Hog® Hydraulic Mixing Station, the Hog Trough® mud pan, the Hog Cart™, the Hog Slopper™, the Booger Hog® Wall Scrubber, the Hog Leg® Wall Brace System, and the Hog Crusher™ Material Recycling System.

# WARRANTY REGISTRATION

Contact:

Company:

Address:

City:

State:

Zip:

Tel:

Fax:

Cell:

Email:

Purchased From:

Direct      Distributor:

Purchase Date:

Serial No.

**Fax Warranty Registration form to 740.962.2037  
or submit online at [www.ezgmfg.com](http://www.ezgmfg.com) by clicking  
on “Products” then “Warranty Cards”.**

PLEASE COMPLETE THIS WARRANTY CARD, AND RETURN  
VIA MAIL, FAX, OR E-MAIL, WITHIN 30 DAYS OF PURCHASE  
TO VALIDATE YOUR MANUFACTURER’S WARRANTY  
FOR ALL EZG MANUFACTURING PRODUCTS.  
WARRANTY PROVISIONS OF THIS MACHINE ARE HANDLED  
DIRECTLY THROUGH THE MANUFACTURER.

EZG MANUFACTURING \* 1833 North Riverview Road, Malta, OH 43758  
PHONE 1-800-417-9272 \* Email: [warranty@ezgmfg.com](mailto:warranty@ezgmfg.com) \* FAX 740-962-2037