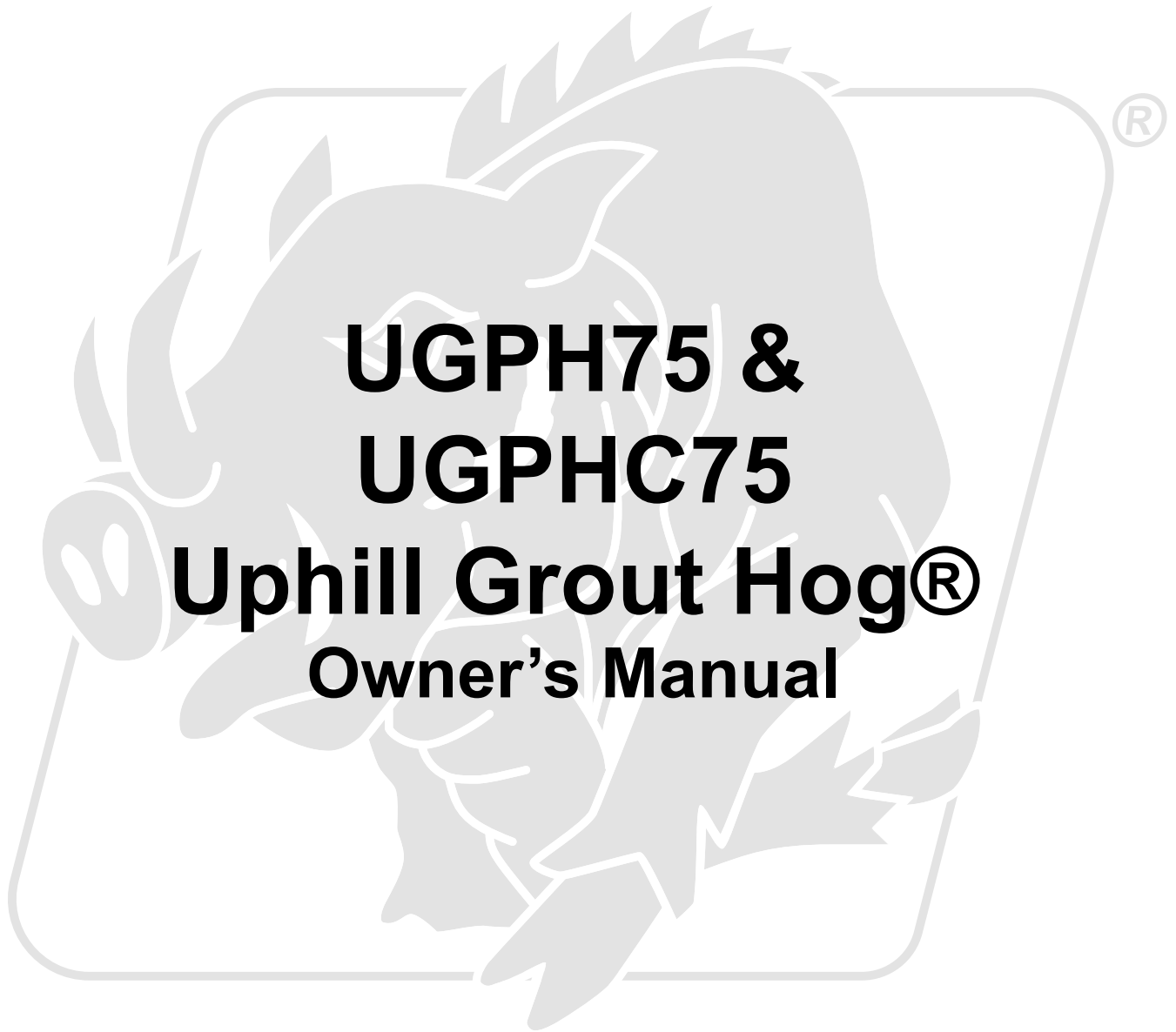




Before using this Grout Hog®,
study and understand the entire
Owner's Manual.

Serial Number _____



**UGPH75 &
UGPHC75
Uphill Grout Hog®
Owner's Manual**



Grout Hog®
EZG MANUFACTURING
1-800-417-9272

EZG Manufacturing
405 Watertown Road
Waterford, Ohio 45786
(740) 749-3512 or 1-800-417-9272
Fax (740) 962-2037 www.ezgmfg.com

TABLE OF CONTENTS

| | |
|--|-----|
| INTRODUCTION..... | 3 |
| ABOUT THIS MANUAL..... | 3 |
| GENERAL INFORMATION..... | 3 |
| SAFETY INFORMATION..... | 3 |
| SAFETY PRECAUTIONS..... | 4-5 |
| CALIFORNIA PROPOSITION 65 WARNING..... | 6 |
| OPERATING INSTRUCTIONS..... | 6 |
| CLEANUP..... | 7 |
| MAINTENANCE..... | 7 |
| MAINTENANCE CHART..... | 8 |
| TROUBLE SHOOTING GUIDE..... | 8 |
| SERVICE RECORDS..... | 9 |
| WARNING LABELS AND LOCATIONS..... | 10 |
| GROUT HOG FRAME ASSEMBLY..... | 11 |
| NOTES..... | 12 |
| OBTAINING SPARE PARTS..... | 12 |
| WARRANTY..... | 13 |
| WARRANTY REGISTRATION..... | 14 |

INTRODUCTION

Congratulations on purchasing one of the finest pieces of masonry equipment on the market today! If this is your first EZG Manufacturing product, you will not be disappointed. If you have previously owned an EZG Manufacturing product, you will find the same high quality and dependability that you have come to expect from EZG Manufacturing.

ABOUT THIS MANUAL





The purpose of this manual is to inform the owner/employer/and the operator, how to safely operate this piece of equipment, and make them aware of any hazards. It also contains important information regarding assembly, set up, operation, and maintenance. It is the Owner/Employer's responsibility to make sure that anyone who operates this machine understands all safety warnings. If you do not understand any items in this manual, please contact the dealer where this product was purchased, or the manufacturer at the number listed throughout this manual. If you have any suggestions about how to make this manual easier to understand, contact the manufacturer. Keep this manual available for reference wherever this piece of equipment is being used and make it available to any operators.

GENERAL INFORMATION

Illustrations in this manual may show details or components that may not be the same as your machine. Continuing improvements to the design of this machine may have caused changes that are not included in this manual. The information in this document is subject to change without notice.

SAFETY INFORMATION

The following safety symbols and signal words will be used throughout this manual and on the product, for your safety and the safety of others, please become familiar with their meaning and heed their warnings.

| | |
|--|---|
|  | This symbol, either used alone or with a signal word, is used to call your attention to instructions involving your safety and/or the safety of others. Failure to follow these instructions will likely result in personal injury or death. |
|  DANGER | This signal word is used to identify a hazard which, if not avoided, will result in death or serious injury. |
|  WARNING | This signal word is used to identify a hazard which, if not avoided, could result in death or serious injury. |
|  CAUTION | This signal word is used to identify a hazard which, if not avoided, could result in minor or moderate injury. |
| NOTICE | This signal word is used to identify a hazard which, if not avoided, could result in property or equipment damage. It also may be used for special instructions related to performance, maintenance or general items. |

SAFETY PRECAUTIONS



DANGER

Failure to obey the following safety instructions will result in DEATH or SERIOUS INJURY.

Stay clear of auger while machine is in operation. Keep all body parts, clothing, jewelry and solid objects away from all moving parts.

Never run Grout Hog® with end cap removed.



WARNING

Failure to obey the following safety instructions could result in DEATH or SERIOUS INJURY.

Read and understand entire manual before operating the Grout Hog®.

For your safety and the safety of others, replace any missing or damaged warning decals by contacting the manufacturer at 1-800-417-9272.

Make sure anyone operating the Grout Hog® is thoroughly familiar with its operation. Keep all unauthorized and untrained personnel, especially children away from Grout Hog®.

Never operate machine with guards or safety devices removed. Do not alter any safety guards.

Never perform any work on the Grout Hog® while it is running. Before working on or cleaning the Grout Hog®, shut off engine and disconnect battery cable.

Never operate the Grout Hog® under the influence of alcohol, drugs, or medications.

This Grout Hog® has been designed and built as a material delivery station, and should not be used for anything other than its intended purpose.

Consult forklift manufacturers specifications to insure load capacity is not exceeded.

| Model | Empty Weight | Max Gross Weight |
|---------|----------------------|-----------------------|
| UGPH75 | 1475 lbs. (669.0 kg) | 4475 lbs. (2029.8 kg) |
| UGPHC75 | 1565 lbs. (709.8 kg) | 4565 lbs. (2070.6 kg) |

Do not exceed Maximum Gross Weight

Always use skid pins and lynch pins or safety chains whenever Grout Hog® is on lift forks.

Never stand under an elevated Grout Hog®.

Never attempt to ride the Grout Hog®.

SAFETY PRECAUTIONS



WARNINGS (*continued*)

The Grout Hog® is intended for use with a supervised hold to run control. If used outside of this scope call the EZG Manufacturing for optional grate to cover hopper.

Avoid breathing dust produced while using the Grout Hog®. Dust may contain crystalline silica and may cause serious health problems.

Do not operate near combustible materials.

Always know the location of nearest fire extinguishers, first aid kit, and emergency personnel phone numbers in case of emergency.

Only lift Grout Hog® from lifting channels or crane bail if equipped.



CAUTION

Failure to obey the following safety instructions could result in MINOR or MODERATE INJURY.

Inspect all hoses, fasteners, bolts and welds for nicks, cracks, cuts, damage, wear or looseness before each use. Repair as needed.

Always wear approved PPE, including glasses, hearing protection, hard hats, and ventilation masks when operating a Grout Hog®.

Do not use the Grout Hog® as a lifting device or with accessories or attachments not recommended by EZG Manufacturing, as damage to equipment or operator might result.

Avoid contact with hot hydraulic fluid.

Allow system to cool before performing any repairs or service.

NOTICE

Use only factory authorized parts.

Used lubricants such as engine and hydraulic oil, and hazardous waste must be taken to an authorized disposal or recycling center.

California - Proposition 65 Warning

Engine exhaust and some of its constituents, and some dust created by power sanding, sawing, grinding, drilling, and other construction activities contains chemicals known to the State of California to cause cancer, birth defects and other reproductive harm. Some examples of these chemicals are:

Lead from lead based paints - Crystalline silica from bricks -Cement and other masonry products -Arsenic and chromium from chemically treated lumber

Your risk from these exposures varies, depending on how often you do this type of work. To reduce your exposure to these chemicals: ALWAYS work in a well ventilated area, and work with approved safety equipment, such as dust masks that are specially designed to filter out microscopic particles.

OPERATING INSTRUCTIONS



WARNING

This equipment is to be operated by trained and qualified personnel over the age of 18. Death or serious injury can result.

Before operating the Grout Hog® it should be properly set up on the jobsite. The Grout Hog® may be lifted by using a forklift. The UGPH75 weighs 1475 lbs.(669.0 kg) empty and 4475 lbs.(2029.8 kg) full and the UGPHC75 weighs 1565 lbs.(709.8 kg) empty and 4565 lbs. (2070.6 kg) full. Check forklift ratings before attempting to move the Grout Hog®.

1. Rotate hopper to upright position.
2. Slide lift forks into lifting channels on Grout Hog®.
3. Insert skid pins into lift channels behind lift forks and secure with locking pins or use chain attachment.



WARNING

Pins must be in place whenever Grout Hog® is on lift forks. Death or serious injury can result.

4. Set Grout Hog® securely on ground. Fill to desired capacity.



WARNING

Check forklift or crane manufacturer's specifications to be sure forklift or crane is designed to handle weight of Grout Hog® and material in hopper. Death or serious injury can result.

5. Transport Grout Hog to desired location and raise above grouting level.
6. Hold discharge hose over area to be grouted.
7. Discharge grout to desired areas until hopper is empty. (Repeat steps 4-7 as needed)
8. To regulate grout flow, squeeze discharge hose; to momentarily stop grout flow, crimp or fold hose.
9. To stop flow for extended period, release button on pendant and hang on provided hook.

NOTICE

When not in use, store Grout Hog® in tilted position with end cap removed to prevent water from accumulating in the hopper.

CLEANUP



CAUTION

Before performing any described maintenance items, make sure engine is off and hydraulic supply hoses are disconnected. Death or serious injury can result.

1. Set Grout Hog® securely on ground. Turn off forklift and remove ignition key. Turn off Honda engine and remove key. Remove skid pins or chain before backing away.
2. Pull spring loaded locking pin on side of hopper and rotate over the release bracket.
3. Firmly grasp the Secondary Pivot Latch Handle, pull to unlock, and lift to dump hopper.



WARNING

Verify spring loaded Pivot Latch has hopper securely locked before cleaning.

4. Remove end cap with provided speed wrench. Firmly grasp auger handle and pull auger out of tube.
5. Unlatch auger tube section and rotate upward for better access to clean tube. Wash out and brush down tube, hopper, auger, and end cap.

NOTICE

Be sure to clean all debris from inside the auger drive end.

6. Flush hose until clean.
7. Slide auger back into place over the power shaft connector. Replace end cap on tube.



DANGER

Never run machine with end cap removed.. Death or serious injury will result.

8. Pull locking pin and rotate hopper to the upright position.

MAINTENANCE

1. Make sure Grout Hog® is clean after each use (see “Cleanup”).
2. Grease fittings before each use. Use EPI GC-LB Rated or equivalent grease.

NOTICE

Following each use, it is a good idea to apply a thin layer of lubricant inside the hopper to make cleaning easier.



CAUTION

Do not use so much lubricant that it might stain blockwork at beginning of next use. If equipped with crane bail inspect bail, hopper, and base for cracked welds, loose bolts, and wear before each use. Repair or replace if needed.

MAINTENANCE CHART

| | | First 100 Hours | After Use | Before Starting Motor | Every Time After Refueling | Before Starting Work | Monthly | Annually or 300 Hours | In the Event of Malfunction | If Damaged | Refer to Honda Owners Manual Supplied with Machine |
|--|-----------------------------|--------------------|--------------|-----------------------------|----------------------------------|----------------------------|---------|-----------------------------|-----------------------------------|---------------|---|
| Complete Machine | Visual Inspection Condition | | | X | X | | | | | | |
| | Clean | | X | X | | | | | | | |
| Hydraulic Filter | Replace | X | | | | | | X | | X | |
| Hydraulic Oil (5-10W energul HPD-HD or equivalent) | Check | | | X | | | | | | | |
| | Replace | X | | | | | | X | | | |
| Honda Motor | Maintenance Repair & Safety | | | | | | | | | | X |
| Hydraulic Hoses & Discharge Hose | Replace | | | | | | | | X | X | |
| | Check | | | X | | | | | | | |
| Auger | Replace | | | | | | | | | X | |
| | Clean | | X | | | | | | | | |
| Warning Decals | Replace | | | | | | | | | X | |
| | Clean | | X | | | X | | | | | |
| Emergency Stop | Functional Test | | | | | X | | | | | |
| | Replace | | | | | | | | X | X | |
| Pendant Switch | Functional Test | | | | | X | | | | | |
| | Replace | | | | | | | | X | X | |
| End Cap & Rear Seal | Grease | | X | X | X | | | | | | |
| | Replace | | | | | | | | X | X | |
| Center Spindle | Grease | | | | | | X | | | | |
| Battery | Replacement | | | | | | | | | | X |

TROUBLESHOOTING

| Symptom | Potential Cause | Possible Solution |
|--|-------------------------------|--|
| Auger will not turn | Low hydraulic fluid | Add hydraulic fluid |
| | Hard concrete around auger | Clean auger |
| | Ice in hopper | Clean hopper |
| | Discharge hose plugged | Clean hose |
| | Pendant or cord damaged | Inspect, replace if needed |
| | Blown fuse | Replace fuse |
| Hopper unloading slowly | Wrong gasket in auger tube | Replace 1 1/4" ID Gasket with 6 5/8" ID Gasket |
| | Discharge hose kinked | Lift hopper to higher elevation |
| | Discharge hose damaged | Replace discharge hose |
| | Auger turning in reverse | Press other hold to run button on pendant |
| | Auger worn | Replace auger |
| Concrete leaking from back of machine | Continuous use without grease | Replace rubber seal and power shaft adapter |
| Grout continues to flow when auger is stopped | Valve not closing | Hold reverse button momentarily to close valve |
| Hopper is difficult to swivel by pulling on discharge hose | Lack of grease | Grease spindle |
| | Faulty support rollers | Replace support rollers |

Note: To override pendant switch and unload hopper, push manual override button located under motor guard on back of machine.

WARNING LABELS AND LOCATIONS

WARNING

- 1 Grout Hog is a special delivery vehicle. Not intended for any other use.
- 2 Before using Grout Hog, refer to owner's Manual.
- 3 Read instructions and safety warnings, especially electrical, on the back of Grout Hog.
- 4 Grout Hog is a special delivery vehicle. Not intended for any other use. The weight is a gross weight. Grout Hog Model Empty Weight Gross Weight
- 5 Do not use in a windy environment.
- 6 Always wear proper safety gear, including a hearing protection when in use.
- 7 Never stand under or on a Grout Hog.
- 8 Never operate Grout Hog with the end cap removed.
- 9 Never use excessive weight on end cap.
- 10 Lock and power supply it when working on Grout Hog.
- 11 Keep all body parts, hair, clothes, jewelry away from moving parts.
- 12 See the Grout Hog, use the Grout Hog in a safe manner. Do not use Grout Hog in a way that is not intended. Do not use Grout Hog in a way that is not intended.

ATTENTION

- 1 Grout Hog should always be used in a safe manner. Do not use Grout Hog in a way that is not intended. Do not use Grout Hog in a way that is not intended.
- 2 Grout Hog should be used in a safe manner. Do not use Grout Hog in a way that is not intended. Do not use Grout Hog in a way that is not intended.
- 3 Grout Hog should be used in a safe manner. Do not use Grout Hog in a way that is not intended. Do not use Grout Hog in a way that is not intended.
- 4 Grout Hog should be used in a safe manner. Do not use Grout Hog in a way that is not intended. Do not use Grout Hog in a way that is not intended.

WARNING

CALIFORNIA PROPOSITION 65

Engine exhaust and some of its constituents, and some dust particles, contain or consist of known carcinogens. Diesel exhaust is also a known carcinogen. Diesel exhaust and other constituents can cause or contribute to the development of cancer. Diesel exhaust and other constituents can also cause or contribute to the development of cancer. Diesel exhaust and other constituents can also cause or contribute to the development of cancer.

Some examples of these constituents are:

- Lead from lead based paint
- Crystalline silica from silica sand and other inorganic products
- Asbestos and chrysotile from chemically treated paper

For full text of Proposition 65, please refer to the text on the back of this label. To reduce your exposure to these chemicals, ALWAYS work in a well-ventilated area, and work with approved safety equipment such as full-face respirators that are specifically designed to filter out microscopic particles.

DANGER

AMPUTATION HAZARD!

Keep hands and body clear of hopper.

Failure to comply could result in an amputation or other injury.



DANGER

Never run machine with end cap removed.

NOTICE

Auger must be removed for effective cleaning.

WARNING

BURN HAZARD!

Surface may be hot. Do not touch.

Severe burns may result.

WARNING

Before using this equipment, read and understand the operator's manual.

Failure to follow operating instructions could result in death or serious injury.

WARNING

PINCH HAZARD!

Keep clear of moving parts while machine is in operation.

Failure to follow operating instructions could result in death or serious injury.

WARNING

BURN HAZARD!

Surface may be hot. Do not touch.

Severe burns may result.

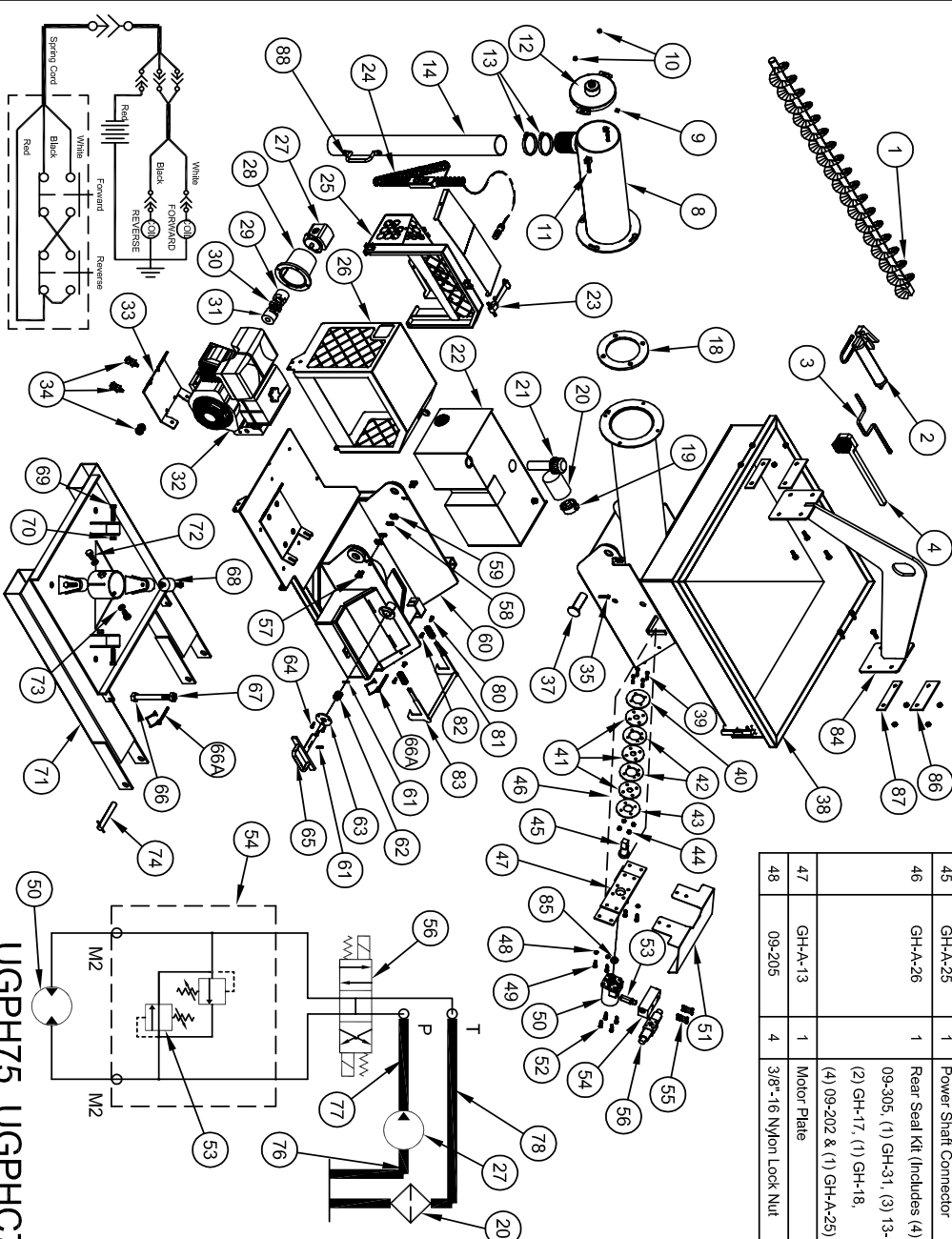
WARNING

Warning: Pins must be in place whenever Grout Hog is on lift forks.

| ITEM | PART NUMBER | DESCRIPTION | QUANTITY |
|------|-------------|---------------------------------|----------|
| 1 | 16-131 | Small Pinch Point Decal | 1 |
| 2 | 16-133 | Pins Must be in Place Decal | 2 |
| 3 | 16-103 | Grout Hog Weight Decal | 1 |
| 4 | 16-104 | Danger - Amputation Decal | 1 |
| 5 | 16-193 | Proposition 65 Decal | 1 |
| 6 | 16-106 | U.S. Flag Decal | 1 |
| 7 | 16-105 | Danger - End Cap Decal | 1 |
| 8 | 16-200 | Remove Auger for Cleaning Decal | 1 |
| 9 | 16-177 | Read Owners Manual Decal | 1 |
| 10 | 16-112 | Burn Hazard Decal | 2 |

GROUT HOG FRAME ASSEMBLY

| ITEM | PART NUMBER | QTY | DESCRIPTION | ITEM | PART NUMBER | QTY | DESCRIPTION | ITEM | PART NUMBER | QTY | DESCRIPTION | ITEM | PART NUMBER | QTY | DESCRIPTION |
|------|-------------|-----|---------------------------|------|-------------|-----|---------------------------|------|-------------|-----|-------------------------------|------|-------------|-----|--|
| 1 | UGH-A-10 | 1 | Auger | 19 | 02-315 | 1 | Filter Head | 31 | 15-102 | 1 | Motor Coupler Half | 49 | 09-308 | 4 | 3/8" 16x1 1/2" Bolt |
| 2 | 11-119 | 1 | Grease Gun | 20 | 02-316 | 1 | Filter Element | 32 | 14-103 | 1 | Honda® Engine | 50 | 02-415 | 1 | Hydraulic Motor |
| 3 | GH-A-6 | 1 | Speed Wrench | 21 | 02-318 | 1 | Filler/Breather Assembly | 33 | UGPH-16 | 1 | Engine Isolation Plate (Bent) | 51 | UGPH-11 | 1 | Hydraulic Motor Guard |
| 4 | 11-108 | 1 | Cleaning Brush | 22 | UGPH-A-4 | 1 | Hydraulic Reservoir | 34 | 02-803 | 4 | Vibration Mounts | 52 | 09-308 | 4 | 3/8" 16x1 1/2" Bolt |
| 8 | UGH-A-11 | 1 | Removable Auger Tube | 23 | 20-103 | 2 | Hood Hold Down Strap | 35 | 09-305 | 2 | 5/16" 18x2" bolt | 53 | 02-634 | 1 | Bi-Directional Relief Cartridge |
| 9 | 09-206 | 2 | 3/8" 16 Square Nut | 24 | GPH-A-22 | 1 | Pendent w/ Male Connector | 37 | UGH-A-13 | 2 | Hopper Pivot Pin | 54 | 02-603 | 1 | Manifold/ Relief Cartridge |
| 10 | 09-214 | 2 | 3/8" 16 Flange Nut | 25 | UGPH-A-2 | 1 | Engine Hood (Fixed Part) | 38 | UGH-A-2 | 1 | Hopper | 55 | 09-338 | 4 | 5/16" 16x2" SHCS |
| 11 | 09-339 | 2 | 3/8"x2" All Thread Bolt | 26 | UGPH-A-3 | 1 | Engine Hood (Hinged Part) | 39 | 09-305 | 4 | 5/16" 18x2" Bolt | 56 | 02-625-A-1 | 1 | Hydraulic Solenoid Valve |
| 12 | UGH-A-12 | 1 | End Cap With Bushing | 27 | 02-515 | 1 | Hydraulic Pump | 40 | GH-31 | 1 | Inner Seal Support Ring | 56A | 02-633 | 1 | Hydraulic Solenoid Valve Coil |
| 12A | 15-145 | 1 | End Cap Bushing 2 1/2" OD | 28 | 02-514 | 1 | Hydraulic Pump Adapter | 41 | 13-116 | 3 | Urethane Seal | 57 | 09-307 | 4 | 3/8" 16x1" Bolt |
| 13 | 12-100 | 2 | Hose Clamp | 29 | 15-101 | 1 | Pump Coupler Half | 42 | GH-17 | 2 | Spacer Ring | 58 | 09-204 | 4 | 3/8" 16 Nylon Lock Nut |
| 14 | 12-105 | 2 | Discharge Hose (By Foot) | 30 | 15-118 | 1 | Coupler Splicer | 43 | GH-18 | 1 | Outer Seal Support Ring | 59 | UGH-11 | 2 | Hopper Pivot Stop |
| 18 | 13-102 | 1 | Rubber Control Disc | | | | | 44 | 09-202 | 4 | 5/16" 18 Nylon Lock Nut | 60 | UGPH-A-1 | 1 | Hopper Pivot Base |
| | | | | | | | | 45 | GH-A-25 | 1 | Power Shaft Connector | 61 | 09-412 | 2 | 1/4" x 1 1/4" Roll Pin |
| | | | | | | | | 46 | GH-A-26 | 1 | Rear Seal Kit (Includes 4) | 62 | 09-812 | 1 | Latch Spring |
| | | | | | | | | 47 | GH-A-13 | 1 | Motor Plate | 63 | UGH-8 | 1 | Latch Retaining Plate |
| | | | | | | | | 48 | 09-205 | 4 | 3/8" 16 Nylon Lock Nut | 64 | 09-301 | 3 | 1/4" 20x1" Bolt |
| | | | | | | | | | | | | 65 | UGH-A-7 | 1 | Pivot Latch |
| | | | | | | | | | | | | 66 | 09-327 | 1 | 1"x8" GR8 Bolt |
| | | | | | | | | | | | | 66A | 09-407 | 2 | 5/16" Latch Pin |
| | | | | | | | | | | | | 67 | 09-213 | 1 | 1" Nylon Lock Nut |
| | | | | | | | | | | | | 68 | 15-139 | 4 | Cam Roller |
| | | | | | | | | | | | | 69 | 09-319 | 4 | 5/8"x2 3/4" Bolt |
| | | | | | | | | | | | | 70 | 09-210 | 4 | 5/8" Nylon Lock Nut |
| | | | | | | | | | | | | 71 | GH-A-2 | 1 | SKD Base |
| | | | | | | | | | | | | 72 | 09-329 | 2 | 3/4" x 1 1/2" GR8 Bolt |
| | | | | | | | | | | | | 73 | 09-113 | 2 | 3/4" lock Washer |
| | | | | | | | | | | | | 74 | GH-521 | 2 | SKD Pin |
| | | | | | | | | | | | | 75 | GH-A-40 | 1 | Brake Pin Assembly |
| | | | | | | | | | | | | 76 | UGPH-A-5 | 1 | Tank to Pump Hydraulic Hose |
| | | | | | | | | | | | | 77 | UGPH-A-6 | 1 | Pump to Valve Hydraulic Hose |
| | | | | | | | | | | | | 78 | UGPH-A-7 | 1 | Valve to Tank Hydraulic Hose |
| | | | | | | | | | | | | 79 | 09-400 | 2 | Lynch Pin |
| | | | | | | | | | | | | 80 | 09-361 | 2 | 3/8" Shoulder Bolt |
| | | | | | | | | | | | | 81 | 09-813 | 2 | Compression Springs |
| | | | | | | | | | | | | 82 | 09-216 | 2 | 5/16" Barrel Nut |
| | | | | | | | | | | | | 83 | UGPH-A-9 | 2 | Secondary Pivot Latch Handle |
| | | | | | | | | | | | | 84 | UGPH-C-A-1 | 1 | Crane Ball Kit (Includes 2) UGH-31, (1) UGH-32, (2) GPH-12, & (2) GPH-13 |
| | | | | | | | | | | | | 85 | 13-115 | 1 | Dust Seal |
| | | | | | | | | | | | | 86 | GPH-12 | 2 | Top Crail Ball Mounting Plate |
| | | | | | | | | | | | | 87 | GPH-13 | 2 | Bottom Crane Ball Mounting Plate |
| | | | | | | | | | | | | 88 | 20-100 | 1 | Grab Handle |



UGPH75, UGPHC75 Uphill Grout Hog® - FRAME

WARRANTY

Limited Warranty

The manufacturer warrants that products manufactured shall be free from defects in material and workmanship that develop under normal use for a period of one year on all products from the date of shipment. The foregoing shall be the exclusive remedy of the buyer and the exclusive liability of the manufacturer. Our warranty excludes normal replaceable wear items, i.e. gaskets, wear parts, seals, O-rings, belts, drive chains, clutches, etc. Any equipment, part or product which is furnished by the manufacturer but manufactured by another, bears only the warranty given by such other manufacturer. (Manufacturer agrees to furnish free of charge a written description of problem or cause.) Warranty is voided by product abuse, alterations, use of equipment in applications for which it was not intended, use of non-manufacturer parts, or failure to follow documented service instructions. The foregoing warranty is exclusive of all other warranties whether written or oral, expressed or implied. No warranty of merchantability or fitness for a particular purpose shall apply. The agents, dealers, and employees of Manufacturer are not authorized to make modifications to this warranty, or additional warranties binding on the Manufacturer. Therefore, additional statements, whether oral or written, do not constitute warranty and should not be relied upon.

The Manufacturer's sole responsibility for any breach of the foregoing warranty provisions, with respect to any product or part not conforming to the Warranty or the description herein contained, is at its option (a) to repair, replace, or refund such product or parts upon the prepaid return thereof to location designated specifically by the Manufacturer. Product returns not shipped prepaid will be refused (b) as an alternative to the foregoing modes of settlement - the Manufacturer's dealer may repair defective units with reimbursement for expenses. A written description of problem or cause must accompany all warranty claims.

Except as set forth here in above and without limitation of the above, there are no warranties or other affirmation which extend beyond the description of the products on the fact here of, or as to operational efficiency, product reliability, or maintainability or compatibility with products furnished by others. In no event, whether as a result of breach of contract or warranty or alleged negligence, shall the Manufacturer, be liable for special or consequential damages including but not limited to: Loss of profits or revenue, loss of use of the product or any associated product, cost of capital, cost of substitute products, facilities or services or claims of customers. Manufacturer does not assume responsibility for any accident due to equipment modification.

No claim will be allowed for products lost or damaged in transit. Such claims should be filed with the carrier within fifteen days.

Effective July 20, 2005

EZG Manufacturing is the exclusive manufacturer of the patented Grout Hog® Grout Delivery System the Mud Hog® Hydraulic Mixing Station, the Hog Trough® mud pan, the Hog Cart™, the Hog Slopper™, the Booger Hog® Wall Scrubber, the Hog Leg® Wall Brace System, and the Hog Crusher™ Material Recycling System.

WARRANTY REGISTRATION

Contact:

Company:

Address:

City:

State:

Zip:

Tel:

Fax:

Cell:

Email:

Purchased From:

Direct Distributor:

Purchase Date:

Serial No.

**Fax Warranty Registration form to 740.962.2037
or submit online at www.ezgmfg.com by clicking
on “Products” then “Warranty Cards”.**

PLEASE COMPLETE THIS WARRANTY CARD, AND RETURN
VIA MAIL, FAX, OR E-MAIL, WITHIN 30 DAYS OF PURCHASE
TO VALIDATE YOUR MANUFACTURER’S WARRANTY
FOR ALL EZG MANUFACTURING PRODUCTS.
WARRANTY PROVISIONS OF THIS MACHINE ARE HANDLED
DIRECTLY THROUGH THE MANUFACTURER.

EZG MANUFACTURING * 1833 North Riverview Road, Malta, OH 43758
PHONE 1-800-417-9272 * Email: warranty@ezgmfg.com * FAX 740-962-2037

EZ SURVEY

Please take a minute to fill out the survey below so that we can better serve our customers.

1. Where did you first hear about EZG Manufacturing?
(check one)

Masonry Magazine Website Newsletter

Masonry Construction Referral

Other:

2. What influenced you to buy?

Quality Price Easy to use Other

3. Who is your sales representative?

4. Are you satisfied with the customer service you received?

Yes No

Explain:

5. What other EZG Manufacturing products do you own?

6. Would you like to be featured in our newsletter?

Yes No

If yes, where can we reach you and what is the best time?

Comments: