



Before using this Grout Hog®,  
study and understand the entire  
Owner's Manual.

Serial Number \_\_\_\_\_



# **GPH75 & GPHC75**

## **Grout Hog®**

### **Owner's Manual**



**Grout Hog®**  
**EZG MANUFACTURING**  
**1-800-417-9272**

**EZG Manufacturing**  
**405 Watertown Road**  
**Waterford, Ohio 45786**  
**(740) 749-3512 or 1-800-417-9272**  
**Fax (740) 962-2037 [www.ezgmfg.com](http://www.ezgmfg.com)**

# TABLE OF CONTENTS

INTRODUCTION.....	3
ABOUT THIS MANUAL.....	3
GENERAL INFORMATION.....	3
SAFETY INFORMATION.....	3
SAFETY PRECAUTIONS.....	4-5
CALIFORNIA PROPOSITION 65 WARNING.....	6
OPERATING INSTRUCTIONS.....	6
CLEANUP.....	7
OBTAINING SPARE PARTS.....	7
TROUBLESHOOTING GUIDE.....	8
MAINTENANCE CHART.....	8
SERVICE RECORDS.....	9
WARNING LABELS AND LOCATIONS .....	10
GPH75 ASSEMBLY DRAWING P.1.....	11
GPH75 ASSEMBLY DRAWING P.2.....	12
GPH75 PARTS LIST.....	13
GPHC75 ASSEMBLY DRAWING P. 1.....	14
GPHC75 ASSEMBLY DRAWING P. 2.....	15
GPHC75 PARTS LIST.....	16
ENGINE ASSEMBLY.....	17
SEAL KIT.....	18
OPTIONS.....	19
NOTES.....	20
WARRANTY.....	21
WARRANTY REGISTRATION.....	22

# INTRODUCTION

Congratulations on purchasing one of the finest pieces of masonry equipment on the market today! If this is your first EZG Manufacturing product, you will not be disappointed. If you have previously owned an EZG Manufacturing product, you will find the same high quality and dependability that you have come to expect from EZG Manufacturing.

## ABOUT THIS MANUAL





The purpose of this manual is to inform the owner/employer/and the operator, how to safely operate this piece of equipment, and make them aware of any hazards. It also contains important information regarding assembly, set up, operation, and maintenance. It is the Owner/Employer's responsibility to make sure that anyone who operates this machine understands all safety warnings. If you do not understand any items in this manual, please contact the dealer where this product was purchased, or the manufacturer at the number listed throughout this manual. If you have any suggestions about how to make this manual easier to understand, contact the manufacturer. Keep this manual available for reference wherever this piece of equipment is being used and make it available to any operators.

## GENERAL INFORMATION

Illustrations in this manual may show details or components that may not be the same as your machine. Continuing improvements to the design of this machine may have caused changes that are not included in this manual. The information in this document is subject to change without notice.

## SAFETY INFORMATION

The following safety symbols and signal words will be used throughout this manual and on the product, for your safety and the safety of others, please become familiar with their meaning and heed their warnings.

	<b>This symbol, either used alone or with a signal word, is used to call your attention to instructions involving your safety and/or the safety of others. Failure to follow these instructions will likely result in personal injury or death.</b>
 <b>DANGER</b>	<b>This signal word is used to identify a hazard which, if not avoided, will result in death or serious injury.</b>
 <b>WARNING</b>	<b>This signal word is used to identify a hazard which, if not avoided, could result in death or serious injury.</b>
 <b>CAUTION</b>	<b>This signal word is used to identify a hazard which, if not avoided, could result in minor or moderate injury.</b>
<b>NOTICE</b>	<b>This signal word is used to identify a hazard which, if not avoided, could result in property or equipment damage. It also may be used for special instructions related to performance, maintenance or general items.</b>

# SAFETY PRECAUTIONS



## DANGER

**Failure to obey the following safety instructions will result in DEATH or SERIOUS INJURY.**

Stay clear of auger while machine is in operation. Keep all body parts, clothing, jewelry and solid objects away from all moving parts.

Never run Grout Hog® with end cap removed.



## WARNING

**Failure to obey the following safety instructions could result in DEATH or SERIOUS INJURY.**

Read and understand entire manual before operating the Grout Hog®.

For your safety and the safety of others, replace any missing or damaged warning decals by contacting the manufacturer at 1-800-417-9272.

Make sure anyone operating the Grout Hog® is thoroughly familiar with its operation. Keep all unauthorized and untrained personnel, especially children away from Grout Hog®.

Never operate machine with guards or safety devices removed. Do not alter any safety guards.

Never perform any work on the Grout Hog® while it is running. Before working on or cleaning the Grout Hog®, shut off engine and disconnect hydraulic supply hoses.

Never operate the Grout Hog® under the influence of alcohol, drugs, or medications.

This Grout Hog® has been designed and built as a material delivery station, and should not be used for anything other than its intended purpose.

Consult forklift manufacturers specifications to ensure load capacity is not exceeded.

Model	Empty Weight	Max Gross Weight
GPH75	1436 lbs. (651.4 kg)	4436 lbs. (2012.1 kg)
GPHC75	1525 lbs. (691.7 kg)	4526 lbs. (2052.2 kg)

Do not exceed Maximum Gross Weight

Always use skid pins and lynch pins or safety chains whenever Grout Hog® is on lift forks.

Never stand under an elevated Grout Hog®.

Never attempt to ride the Grout Hog®.

# SAFETY PRECAUTIONS



## **WARNINGS** (*continued*)

The Grout Hog® is intended for use with a supervised hold to run control. If used outside of this scope call the EZG Manufacturing for optional grate to cover hopper.

Avoid breathing dust produced while using the Grout Hog®. Dust may contain crystalline silica and may cause serious health problems.

Do not operate near combustible materials.

Always know the location of nearest fire extinguishers, first aid kit, and emergency personnel phone numbers in case of emergency.



## **CAUTION**

**Failure to obey the following safety instructions could result in MINOR or MODERATE INJURY.**

Inspect all hoses, fasteners, bolts and welds for nicks, cracks, cuts, damage, wear or looseness before each use. Repair as needed.

Always wear approved PPE, including glasses, hearing protection, hard hats, and ventilation masks when operating a Grout Hog®.

Do not use the Grout Hog® as a lifting device or with accessories or attachments not recommended by EZG Manufacturing, as damage to equipment or operator might result.

Avoid contact with hot hydraulic fluid.

Allow system to cool before performing any repairs or service.

## **NOTICE**

Use only factory authorized parts.

Used lubricants such as engine and hydraulic oil, and hazardous waste must be taken to an authorized disposal or recycling center.

## California - Proposition 65 Warning

Engine exhaust and some of its constituents, and some dust created by power sanding, sawing, grinding, drilling, and other construction activities contains chemicals known to the State of California to cause cancer, birth defects and other reproductive harm. Some examples of these chemicals are:  
Lead from lead based paints - Crystalline silica from bricks -Cement and other masonry products -Arsenic and chromium from chemically treated lumber  
Your risk from these exposures varies, depending on how often you do this type of work. To reduce your exposure to these chemicals: ALWAYS work in a well ventilated area, and work with approved safety equipment, such as dust masks that are specially designed to filter out microscopic particles.

## OPERATING INSTRUCTIONS



### WARNING

**This equipment is to be operated by trained and qualified personnel over the age of 18. Death or serious injury can result.**

Before operating the Grout Hog® it should be properly set up on the jobsite. The Grout Hog® may be lifted by using a forklift. The GPH75 weighs 1436 lbs.(651.4kg) empty and 4436lbs.(2012.1kg) full and the GPHC75 weighs 1525lbs.(691.7kg) empty and 4526lbs.(2052.5kg) full. Check forklift ratings before attempting to move the Grout Hog®.

1. Start engine (see Honda owner's manual page 15). Let engine run for 5 minutes and turn off.
2. Slide lift forks into lifting channels on Grout Hog®.
3. Insert skid pins into lift channels behind lift forks and secure with locking pins or use chain attachment.



### WARNING

**Pins must be in place whenever Grout Hog® is on lift forks. Death or serious injury can result.**

4. Set Grout Hog® securely on ground. Fill to desired capacity.



### WARNING

**Check forklift or crane manufacturer's specifications to be sure forklift or crane is designed to handle weight of Grout Hog® and material in hopper. Death or serious injury can result.**

5. Transport Grout Hog® to desired location. Start engine, fully open throttle, and raise above grouting level.
6. Hold discharge hose over area to be grouted.
7. Discharge grout to desired areas until hopper is empty. (Repeat steps 4-7 as needed)
8. To regulate grout flow, squeeze discharge hose; to momentarily stop grout flow, crimp or fold hose.
9. To stop flow for extended period, push reverse on pendant switch until valve closes then release button, and hang on hook provided.

**NOTICE: In the unlikely event that the auger plugs, momentarily push the reverse button on the pendant switch.**

## CLEANUP



### CAUTION

**Before performing any described maintenance items, make sure engine is off. Death or serious injury can result.**

1. Set Grout Hog® securely on ground. Turn off and remove ignition key. Remove skid pins or chains before backing away.
2. Remove end cap from auger tube.
3. Grasp auger handle firmly and pull auger straight out of tube.
4. Hose out and brush down hopper, then spray out and brush down auger until all excess grout is removed.
5. Flush discharge hose until clean.
6. Slide auger back in Grout Hog® so that it fits securely in place. Install the end cap back on tube.



### DANGER

**Never run machine with end cap removed. Death or serious injury will result.**

7. Grease the fittings using EPI rated or equivalent grease. There are 4 grease fittings on the Grout Hog®, they are identified on the parts list by #62.

Following each use, it is a good idea to apply a thin layer of lubricant to the inside of the hopper to make cleaning easier.

**NOTICE: Do not use so much lubricant that it might stain block work at beginning of next use.**

If equipped with crane bail, inspect crane bail, hopper, and base for cracked welds, loose bolts, and wear before each use. Repair or replace if needed.

## OBTAINING SPARE PARTS

Spare parts for your Grout Hog® may be obtained by the following procedure:

1. Record the information from the serial number tag located on the frame.
2. Using the parts reference table in this manual, record the part number or component.
3. Contact your local Grout Hog® dealer or EZG Manufacturing at 1-800-417-9272 with the information recorded.

# TROUBLESHOOTING

Symptom	Potential Cause	Possible Solution
Auger will not turn	Low hydraulic fluid	Add hydraulic fluid
	Hard concrete around auger	Clean auger
	Ice in hopper	Clean hopper
	Discharge hose plugged	Clean hose
	Pendant or cord damaged	Inspect, replace if needed
	Blown fuse	Replace fuse
Hopper unloading slowly	Wrong gasket in auger tube	Replace 1 1/4" ID Gasket with 6 5/8" ID Gasket
	Discharge hose kinked	Lift hopper to higher elevation
	Discharge hose damaged	Replace discharge hose
	Auger turning in reverse	Press other hold to run button on pendant
	Auger worn	Replace auger
Concrete leaking from back of machine	Continuous use without grease	Replace rubber seal and power shaft adapter
Grout continues to flow when auger is stopped	Valve not closing	Hold reverse button momentarily to close valve
Hopper is difficult to swivel by pulling on discharge hose	Lack of grease	Grease spindle
	Faulty support rollers	Replace support rollers

# MAINTENANCE CHART

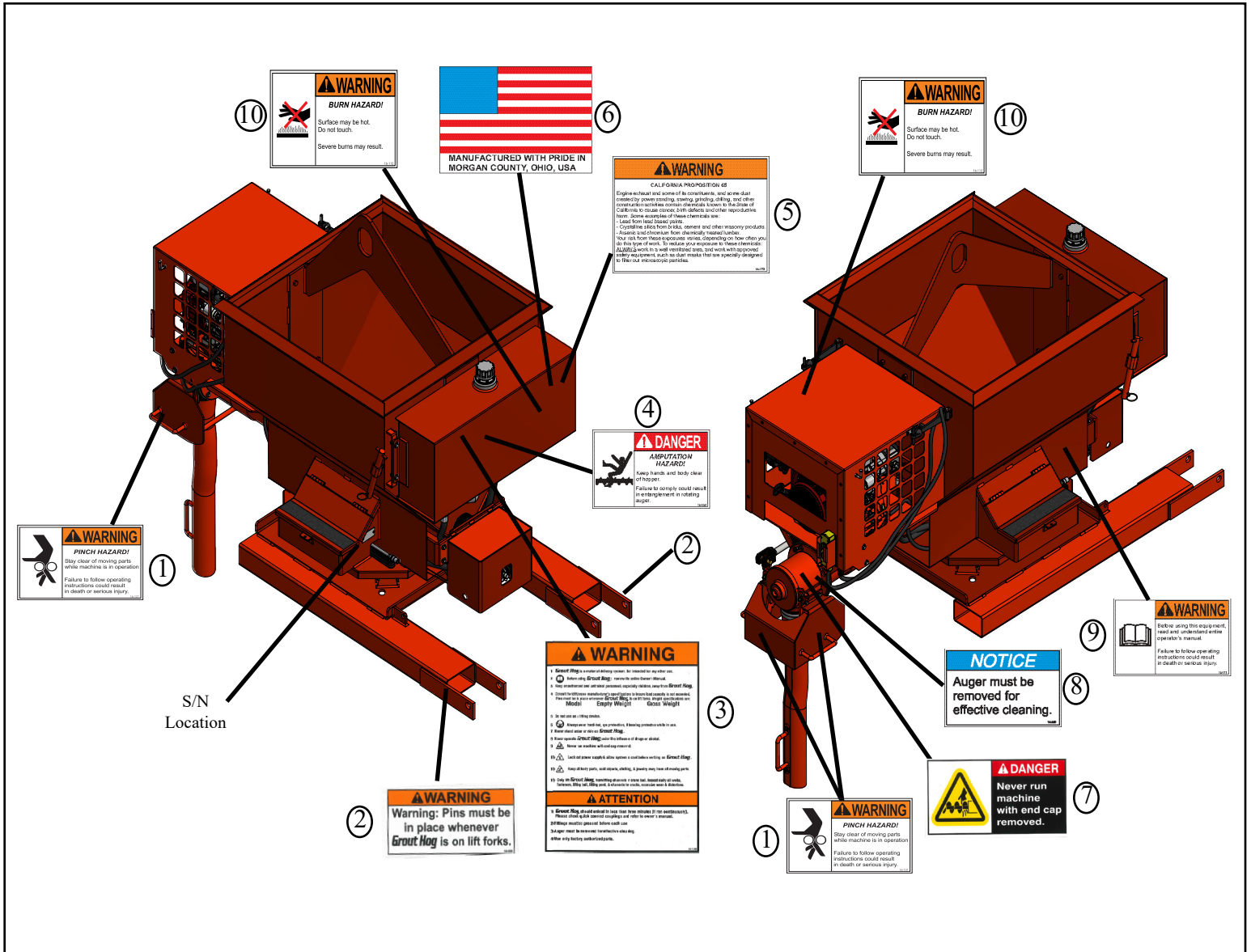
		First 100 Hours	After Use	Before Starting Motor	Every Time After Refueling	Before Starting Work	Monthly	Annually or 300 Hours	In the Event of Malfunction	If Damaged	Refer to Honda Owners Manual Supplied with Machine
Complete Machine	Visual Inspection Condition			X	X						
	Clean		X	X							
Hydraulic Filter	Replace	X						X		X	
	Check			X							
Hydraulic Oil (5-10W energul HPD-HD or equivalent)	Replace	X						X			
	Maintenance Repair & Safety										X
Hydraulic Hoses & Discharge Hose	Replace								X	X	
	Check			X							
Auger	Replace									X	
	Clean		X								
Warning Decals	Replace									X	
	Clean		X			X					
Emergency Stop	Functional Test					X					
	Replace								X	X	
Pendant Switch	Functional Test					X					
	Replace								X	X	
End Cap & Rear Seal	Grease		X	X	X						
	Replace								X	X	
Center Spindle	Grease						X				
Battery	Replacement										X



# SERVICE RECORDS

SERVICE PERFORMED	DATE	INITIALS

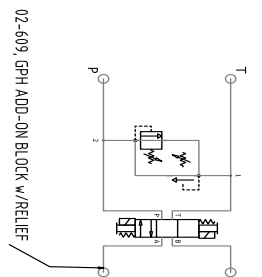
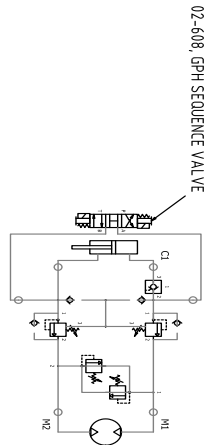
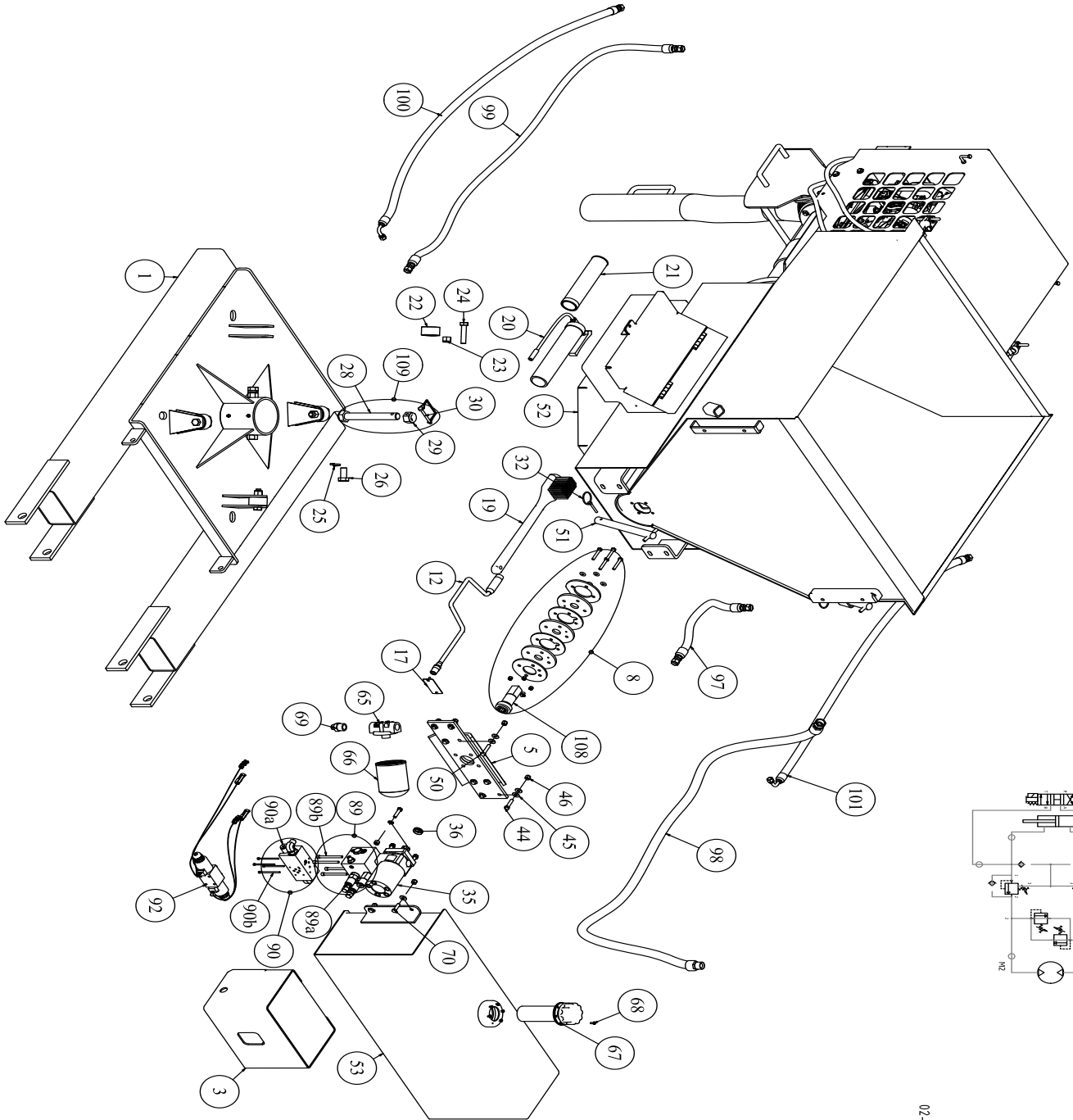
# WARNING LABELS AND LOCATIONS



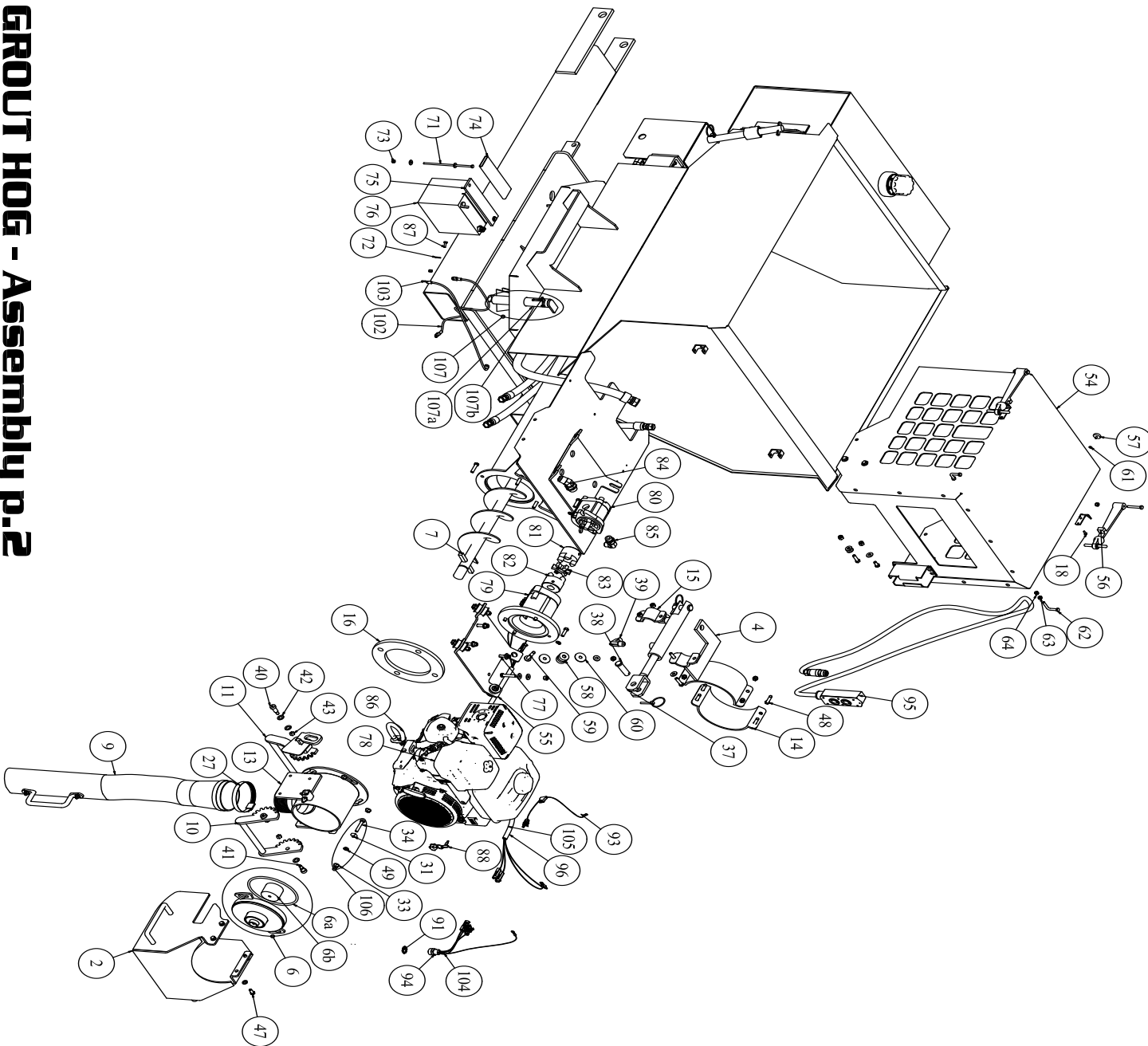
ITEM	PART NUMBER	DESCRIPTION	QUANTITY
1	16-131	Small Pinch Point Decal	3
2	16-133	Pins Must be in Place Decal	2
3	16-195	Grout Hog Weight Decal	1
4	16-104	Danger - Amputation Decal	1
5	16-193	Proposition 65 Decal	1
6	16-106	U.S. Flag Decal	1
7	16-105	Danger - End Cap Decal	1
8	16-200	Remove Auger for Cleaning Decal	1
9	16-177	Read Owners Manual Decal	1
10	16-112	Hot Surface	2

# GP75 ASSEMBLY DRAWING P. 1

## GP75 GROUT HOG - Assembly p. 1



GPH75 GROUT HOG - Assembly p.2

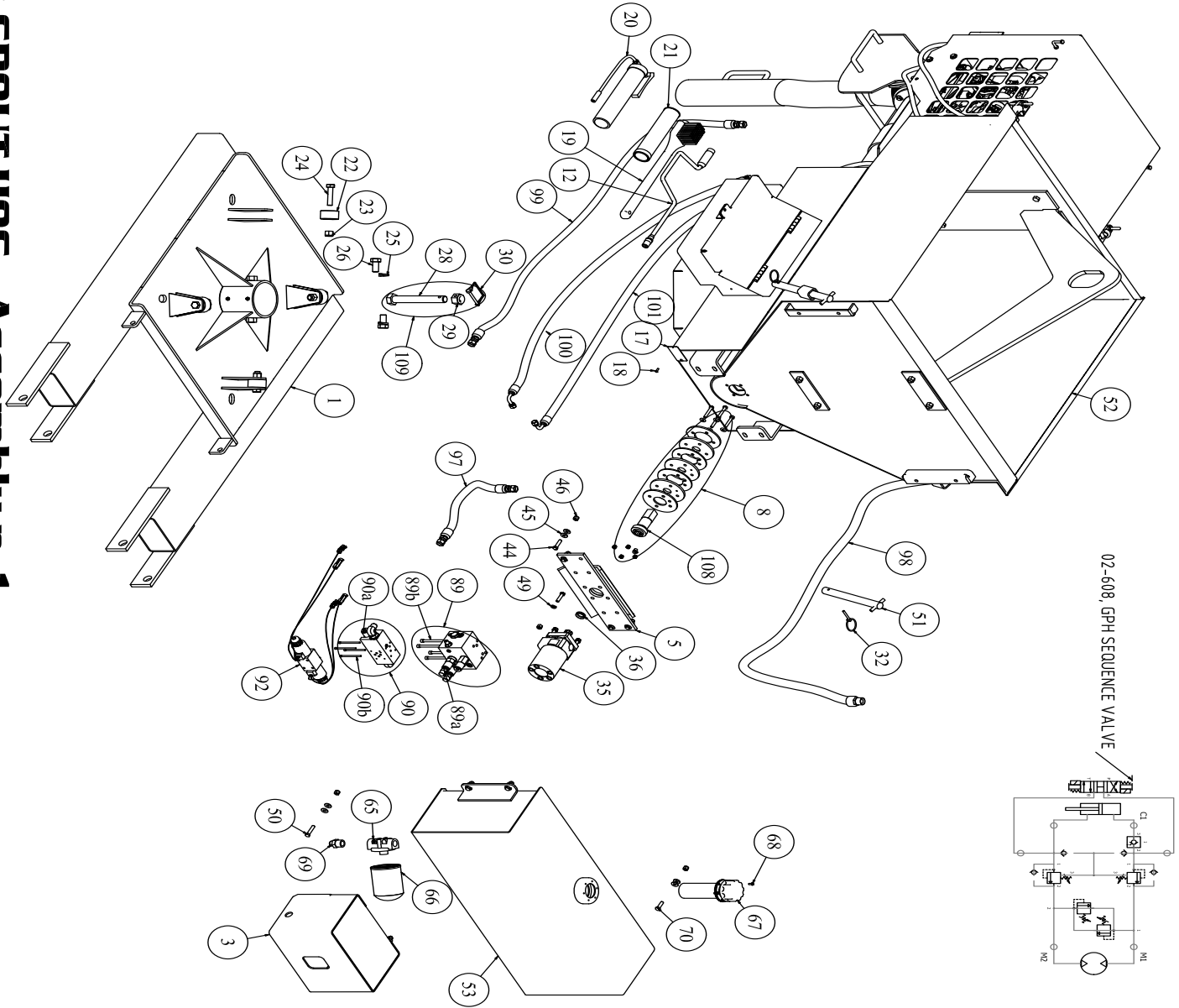


# GPH75 PARTS LIST

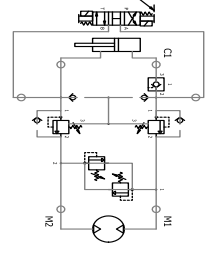
## GPH75 - Parts List

PARTS LIST				PARTS LIST				PARTS LIST			
ITEM	QTY	PART NUMBER	DESCRIPTION	ITEM	QTY	PART NUMBER	DESCRIPTION	ITEM	QTY	PART NUMBER	DESCRIPTION
1	1	GH-A-2	GH75 Base	39	2	02-250	1/2" JICM TO 3/8" NPTM 90 DEG Adaptor	79	1	02-514	Pump Adaptor- All MH/GPH/U/GPH
2	1	GH-A-10	GH-7" Tube-Snout Guard Assembly	40	1	09-349	1/2" x 1" x 3/8" Thread-Shoulder Screw	80	1	02-515	DFC-GP-F20-10-P-C Gear Pump GPH-U/GPH
3	1	GH-A-11	GH-Hydraulic Motor Guard Assembly	41	3	09-334	1/2" x 1/2" x 3/8" Thread-Shoulder Screw	81	1	15-101	Maska 5/8" Bore Coupling
4	1	GH-A-12	GH-7" Tube Shut-off Cylinder Mount Assembly	42	5	09-119	Shim 3/40" Thick x 1/2" ID x 7/8" OD	82	1	15-102	Maska 1" Bore Coupling
5	1	GH-A-13	GH-Hydraulic Motor Mount Plate Welded	43	4	09-205	3/8"-16 Nut	83	1	15-118	Elastomeric Coupling Spider
6	1	GH-A-17	GH-7" End Cap w/ Bushing	44	14	09-308	3/8"-16 x 2" GR5 Bolt	84	1	02-259	3/4" JICM to 3/4" ORM 45 DEG Adaptor
6a	1	15-100	Auger Shaft Bushing 2 1/2" OD x 1.36" ID	45	56	09-105	5/16" Flat Washer	85	1	02-258	1/2" JICM to 5/8" ORM 90 DEG Adaptor
6b	1	13-109	Grout Hog End Cap O-Ring	46	33	09-204	3/8"-16 Nylon Nut	86	1	20-120	Model # HON 1412 Drainzit
7	1	GH-A-16	GH-Auger (4 7/8" x 65 7/8")	47	6	09-355	3/8"-16 x 3/4" GR5 Bolt	87	2	09-322	1/4"-20 x 3/4" GR5 Bolt
8	1	GH-A-26	GH-Rear Seal Kit	48	7	09-312	3/8"-16 x 2" GR5 Bolt	88	2	20-152	EZ Grout Coporation/Keychain-Hog
9	1	GH-A-27	GH-8" Discharge Hose w/Handle	49	16	09-102	3/8" Lock Washer	89	1	02-608	GPH-Sequence Valve Assembly
10	1	GH-A-42	GH-7" Tube Front Snout Shut-off Arm	50	4	09-311	3/8"-16 x 1 3/4" GR5 Bolt	89a	2	02-645	Hydrator/Sequence Cartridge
11	1	GH-A-43	GH-7" Tube Rear Snout Shut-off Arm	51	2	GH-521	GH/U/GH Gout Hog-Fork Pin Assembly	89b	4	09-348	5/16" -18 x 3 1/2" Socket Head Cap Screw
12	1	GH-A-6	GH-Speed Wrench Assembly	52	1	GPH-A-4	GPH-Hopper Assembly	90	1	02-609	GPH-Add-on Block w/Relief
13	1	GH-A-9	GH-7" Snout w/4" Discharge	53	1	GPH-A-1	GPH-16 Gal. Hydraulic Tank	90a	1	02-634	Detrol Bi-Directional Relief
14	1	SS-15-P	Snout Shut-off Tube Strap 7"	54	1	GPH-A-2	GPH-Engine Hood Assembly	90b	4	09-350	#10-24 x 3" Socket Head Cap Screw
15	1	SS-11-P	Snout Shut-off Cylinder Mount Strap	55	1	MH12-8	MH12-Mud Hog-Engine Isolation Plate	91	1	03-510	1/2" Steel Locknut
16	1	13-101	Grout Hog 10" OD x 6 5/8" ID x 1/2" T Gasket	56	2	20-103	Hood Hold Down Strap	92	1	02-625-A-1	GPH-Argo D03 Valve with Connectors
17	1	20-126	Blank Metal Plates	57	2	20-139	9541K310-24 Rubber Bumper	93	1	GPH-A-26	GPH-Fuse Holder Assembly
18	6	20-105	Rivets for Name Plates	58	4	02-803	2-Piece Vibration Mount Neoprene	94	1	GPH-A-23	GPH-Female Screw Conn. w/ 3 Connectors
19	1	11-108	Cleaning Brush	59	4	09-314	3/8"-16 x 2 1/2" GR5 Bolt	95	1	GPH-A-22	Woodhead Cont w/ Coil Cord & Screw on Conn.
20	1	11-119	Pistol Grease Gun w/Whip Hose 18"	60	8	09-114	3/8" x 1 1/2" Fender Washer				
21	1	20-101	Delvac Xtreme Service Grease (10/pkg)	61	2	09-224	#10-24 Hex Nut	96	1	GPH-A-25	GPH-Wire Harness for Argo Valve
22	4	15-139	RBC Y72L Bearing Support Cam Roller	62	2	09-306B	5/16"-18 x 3" GR5 Bolt	97	1	GPH-A-17	GPH-V to T Hose
23	4	09-210	5/8"-11 Nylon Nut	63	2	09-203	5/16"-18 Nut	98	1	GPH-A-15	GPH-T to P Hose
24	4	09-319	5/8"-11 X 2 3/4" GR5 Bolt	64	3	09-202	5/16"-18 Nylon Nut	99	1	GPH-A-16	GPH-P to V Hose
25	2	09-113	3/4" Lock Washer	65	1	02-315	Filter Head 3/4" NPT	100	1	GH-A-23	GH-Cylinder Hose Assembly-Left V to C
26	2	09-329	3/4"-10 X 1 1/2" GR8 Bolt	66	1	02-316	Hydraulic Filter	101	1	GH-A-23	GH-Cylinder Hose Assembly-Right V to C
27	2	12-100	Grout Hog 4" x 3/8" Hose Clamp	67	1	02-318	Hydraulic Fill Cap/Breather	102	1	MH-A-85	MH12/20 Negative Battery Cable 18"
28	1	09-327	1" x 8" GR8 Bolt	68	6	09-352	#10-32 x 1/2" Thread Cutting Screw Type F	103	1	MH-A-86	MH12/20 Positive Battery Cable 28"
29	1	09-213	1"-8 Nylon Nut	69	1	02-204	1/2" JICM to 3/4" NPTM Adaptor	104	1	03-133	1/4" Wire Loom
30	1	09-407	5/16" Latch Pin	70	12	09-310	3/8"-16 x 1 1/4" GR5 Bolt	105	1	03-174	3/8" Polyloam
31	2	09-206	3/8"-16 x 5/8" Square Nut	71	2	09-384	1/4"-20 x 7 1/2" GR2 Bolt	106	1	GH-A-29	Grout Hog-Snout Cap Bolt Kit
32	4	09-400	1/4" Linch Pins	72	6	09-104	1/4" Flat Washer	107	1	GH-A-40	Grout Hog Swivel Locking Pin Assembly
33	6	09-214	3/8"-16 Flange Nut	73	4	09-200	1/4"-20 Nylon Nut	107a	1	GH-534	GH-Swivel Latch Pin 7/8" CR 8" Long
34	2	09-339	3/8"-16 x 2" Full Thread Bolt	74	1	12-115	1 1/2" Blue PVC Layflat Water Discharge Hose	107b	1	09-410	1/4" x 2" Roll Pin
35	1	02-415	Grout Hog Parker Hydraulic Motor	75	1	MH-61	MH12-20 Battery Hold Down	108	1	GH-A-25	GH-Power Shaft Connector
36	1	13-115	V-Ring, Dust Seal for GH Hydraulic Motor	76	1	03-177	Deka Trac 225 Battery	109	1	GH-A-31	GH-Swivel Bolt Kit
37	1	02-703	Grout Hog Cylinder 1 1/2" Bore x 4" Stroke	77	1	09-305	5/16"-18 x 2" GR5 Bolt			02-426	Grout Hog Motor Seal Kit Parker TB Series
38	2	09-428	Clevis Pin 3/4" x 2 1/2"	78	1	14-103	GX390UT7QAE2 Honda Engine -3 AMP				

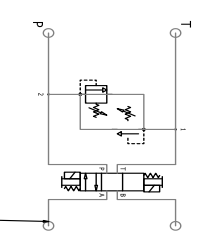
## GPHC75 GROUT HOG - Assembly p. 1



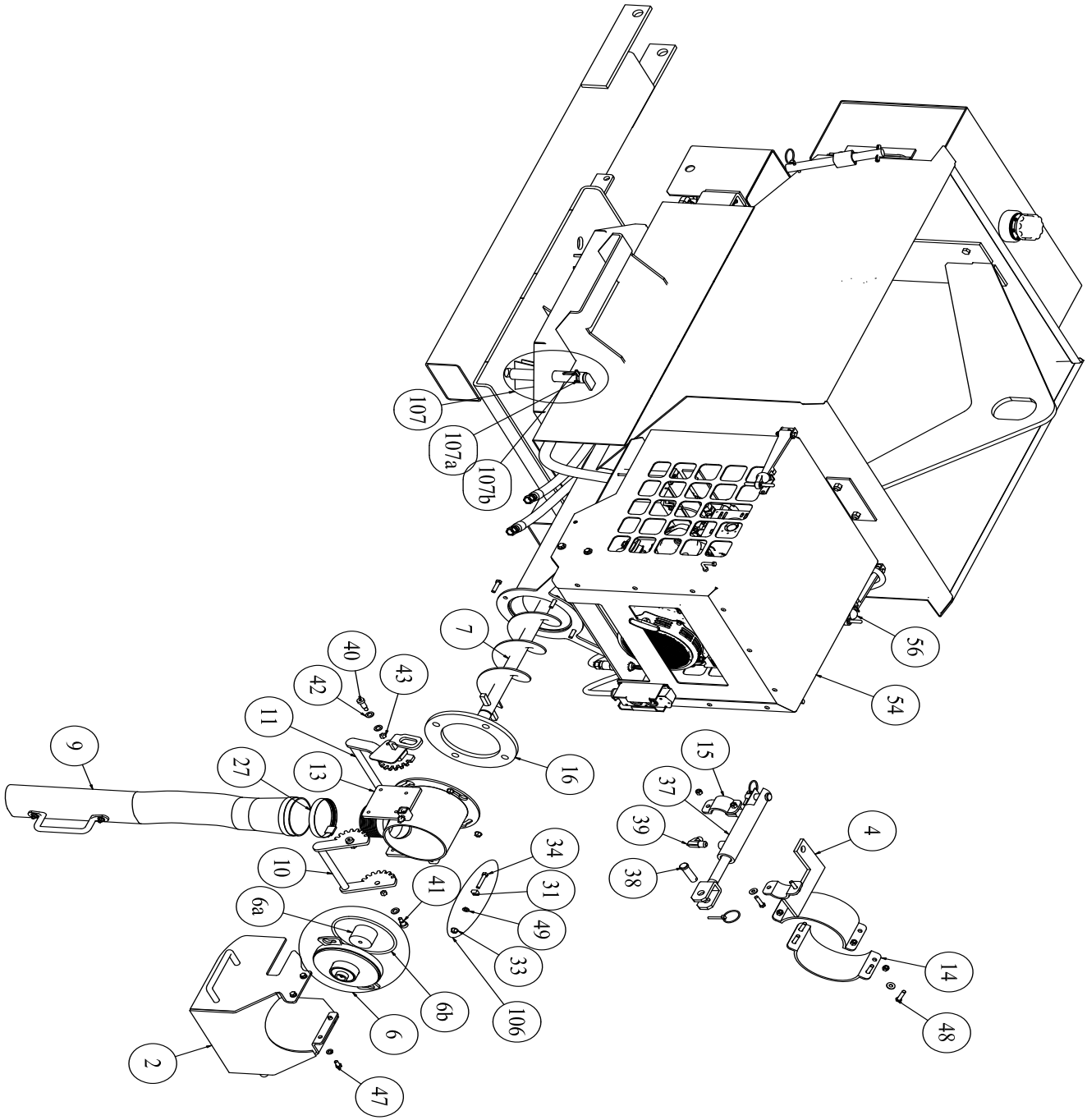
02-608, GPH SEQUENCE VALVE



02-609, GPH ADD-ON BLOCK w/RELIEF



GPHC75 GROUT HOG - Assembly p.2



# GPHC75 PARTS LIST

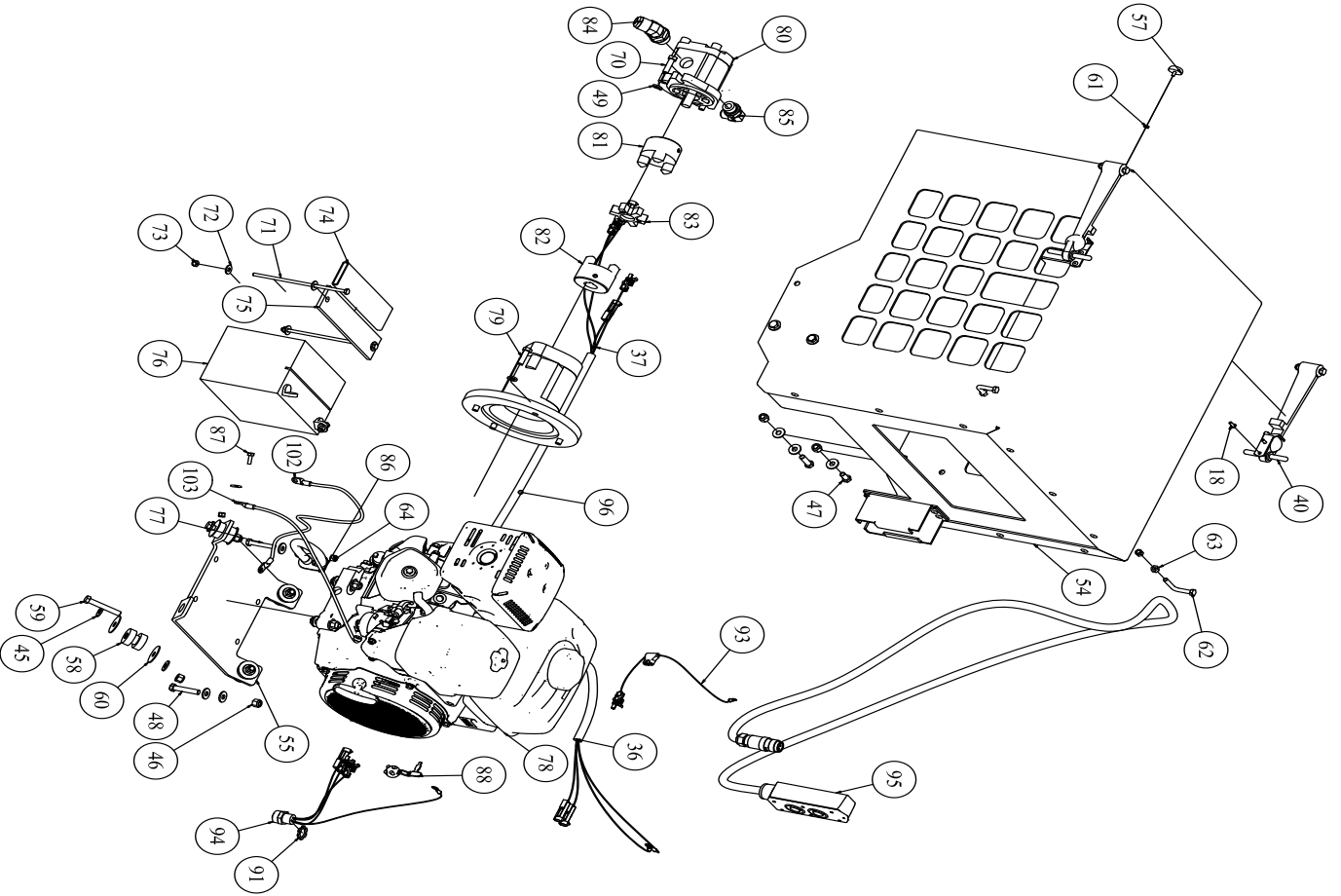
## GPHC75 - Parts List

PARTS LIST				PARTS LIST				PARTS LIST			
ITEM	QTY	PART NUMBER	DESCRIPTION	ITEM	QTY	PART NUMBER	DESCRIPTION	ITEM	QTY	PART NUMBER	DESCRIPTION
1	1	GH-A-2	GH75 Base	39	2	02-250	1/2" JICM TO 3/8" NPTM 90 DEG Adaptor	79	1	02-514	Pump Adaptor- All MH/GPH/UGPH
2	1	GH-A-10	GH-7" Tube-Shout Guard Assembly	40	1	09-349	1/2" x 1" x 3/8" Thread-Shoulder Screw	80	1	02-515	DFC-GP-F20-10-B-C Gear Pump GPH-U-GPH
3	1	GH-A-11	GH-Hydraulic Motor Guard Assembly	41	3	09-334	1/2" x 1/2" x 3/8" Thread-Shoulder Screw	81	1	15-101	Masks 5/8" Bore Coupling
4	1	GH-A-12	GH-7" Tube Shut-off Cylinder Mount Assembly	42	5	09-119	Shim 3/40" Thick x 1/2" ID x 7/8" OD	82	1	15-102	Masks 1" Bore Coupling
5	1	GH-A-13	GH-Hydraulic Motor Mount Plate Welded	43	4	09-205	3/8"-16 Nut	83	1	15-118	Elastomeric Coupling Splicer
6	1	GH-A-17	GH-7" End Cap w/Brushing	44	14	09-308	3/8"-16 x 2" GR5 Bolt	84	1	02-259	3/4" JICM to 3/4" ORKM 45 DEG Adaptor
6a	1	15-100	Auger Shaft Bushing 2 1/2" OD x 1.36" ID	45	56	09-105	5/16" Flat Washer	85	1	02-258	1/2" JICM to 5/8" ORKM 90 DEG Adaptor
7	1	GH-A-16	GH-Auger (4 7/8" x 65 7/8")	46	33	09-204	3/8"-16 Nylon Nut	86	1	20-120	Model # HON 1412 Drainziti
8	1	GH-A-26	GH-Rear Seal Kit	47	6	09-355	3/8"-16 x 3/4" GR5 Bolt	87	2	09-322	1/4"-20 x 3/4" GR5 Bolt
9	1	GH-A-27	GH-8" Discharge Hose w/Handle	48	7	09-312	3/8"-16 x 2" GR5 Bolt	88	2	20-152	EZ Groun Corporation/Keychain-Hog
10	1	GH-A-42	GH-7" Tube Front Shout Shut-off Arm	49	16	09-102	3/8" Lock Washer	89	1	02-608	GPH-Sequence Valve Assembly
11	1	GH-A-43	GH-7" Tube Rear Shout Shut-off Arm	50	4	09-311	3/8"-16 x 1 3/4" GR5 Bolt	89a	2	02-645	Hydrancee Sequence Cartridge
12	1	GH-A-6	GH-Speed Wrench Assembly	51	2	GH-521	GH/UGH Gout Hog-Fork Pin Assembly	89b	4	09-348	5/16" -18 x 3 1/2" Socket Head Cap Screw
13	1	GH-A-9	GH-7" Snout w/4" Discharge	52	1	GPH-C-A-4	GPHC-Hopper Assembly w/ Crane Bale	90	1	02-609	GPH-Add-on Block w/Relief
14	1	SS-15-P	Snout Shut-off Tube Strap 7"	53	1	GPH-A-1	GPH-16 Gal. Hydraulic Tank	90a	1	02-634	Detrol Bi-Directional Relief
15	1	SS-11-P	Snout Shut-off Cylinder Mount Strap	54	1	GPH-A-2	GPH-Engine Hood Assembly	90b	4	09-330	#10-24 x 3" Socket Head Cap Screw
16	1	13-101	Grou Hog 10" OD x 6 5/8" ID x 1/2" Gasket	55	1	MH12-8	MH12-Mid Hog-Engine Isolation Plate	91	1	03-510	1/2" Steel Locknut
17	1	20-126	Blank Metal Plates	56	2	20-103	Hood Hold Down Strap	92	1	02-625-A-1	GPH-Argo D03 Valve with Connectors
18	6	20-105	Rivets for Name Plates	57	2	20-139	954IK310-24 Rubber Bumper	93	1	GPH-A-26	GPH-Fuse Holder Assembly
19	1	11-108	Cleaning Brush	58	4	02-803	2-Piece Vibration Mount Neoprene	94	1	GPH-A-23	GPH-Framble Screw Conn. w/ 3 Connectors
20	1	11-119	Pistol Grease Gun w/Whip Hose 18"	59	4	09-314	3/8"-16 x 2 1/2" GR5 Bolt	95	1	GPH-A-22	Woodhead Cont w/ Coil Cord & Screw on Conn.
21	1	20-101	DeVae Xtreme Service Grease (10/pkg)	60	8	09-114	3/8" x 1 1/2" Fender Washer	96	1	GPH-A-25	GPH-Wire Harness for Argo Valve
22	4	15-139	RBC Y72L Bearing Support Cam Roller	61	2	09-224	#10-24 Hex Nut	97	1	GPH-A-17	GPH-V to T Hose
23	4	09-210	5/8"-11 Nylon Nut	62	2	09-306B	5/16"-18 x 3" GR5 Bolt	98	1	GPH-A-15	GPH-T to D Hose
24	4	09-319	5/8"-11 X 2 3/4" GR5 Bolt	63	2	09-203	5/16"-18 Nut	99	1	GPH-A-16	GPH-P to V Hose
25	2	09-113	3/4" Lock Washer	64	3	09-202	5/16"-18 Nylon Nut	100	1	GH-A-23	GH-Cylinder Hose Assembly-Left V to C
26	2	09-329	3/4"-10 X 1 1/2" GR5 Bolt	65	1	02-315	Filter Head 3/4" NPT	101	1	GH-A-23	GH-Cylinder Hose Assembly-Right V to C
27	2	12-100	Grou Hog 4" x 3/8" Hose Clamp	66	1	02-316	Hydraulic Filter	102	1	MH-A-85	MH12/20 Negative Battery Cable 18"
28	1	09-327	1" x 8" GR8 Bolt	67	1	02-318	Hydraulic Fill Cap/Breather	103	1	MH-A-86	MH12/20 Positive Battery Cable 28"
29	1	09-213	1"-8 Nylon Nut	68	6	09-352	#10-32 x 1/2" Thread Cutting Screw Type F	104	1	03-133	1/4" Wire Loom
30	1	09-407	5/16" Latch Pin	69	1	02-204	1/2" JICM to 3/4" NPTM Adaptor	105	1	03-174	3/8" Polyloom
31	2	09-206	3/8"-16 x 5/8" Square Nut	70	12	09-310	3/8"-16 x 1 1/4" GR5 Bolt	106	1	GH-A-29	Grou Hog-Snout Cap Bolt Kit
32	4	09-400	1/4" Linch Pins	71	2	09-384	1/4"-20 x 7 1/2" GR2 Bolt	107	1	GH-A-40	Grou Hog-Swivel Locking Pin Assembly
33	6	09-214	3/8"-16 Flange Nut	72	6	09-104	1/4" Flat Washer	107a	1	GH-534	GH-Swivel Latch Pin 7/8" CR 8" Long
34	2	09-339	3/8"-16 x 2" Full Thread Bolt	73	4	09-200	1/4"-20 Nylon Nut	107b	1	09-410	1/4" x 2" Roll Pin
35	1	02-415	Grou Hog Parker Hydraulic Motor	74	1	12-115	1 1/2" Blue PVC Tap/Flat Water Discharge Hose	108	1	GH-A-25	GH-Power Shaft Connector
36	1	13-115	V-Ring, Dust Seal for GH Hydraulic Motor	75	1	MH-61	MH12-20 Battery Hold Down	109	1	GH-A-31	GH-Swivel Bolt Kit
37	1	02-703	Grou Hog Cylinder 1 1/2" Bore x 4" Stroke	76	1	03-177	Deka Trac 225 Battery			02-426	Grou Hog Motor Seal Kit Parker TB Series
38	2	09-428	Clevis Pin 3/4" x 2 1/2"	77	1	09-305	5/16"-18 x 2" GR5 Bolt				
				78	1	14-103	GX390UT/Q0AE2 Honda Engine -3 AMP				



# ENGINE ASSEMBLY

## GP75 & GP75C - Engine Assembly

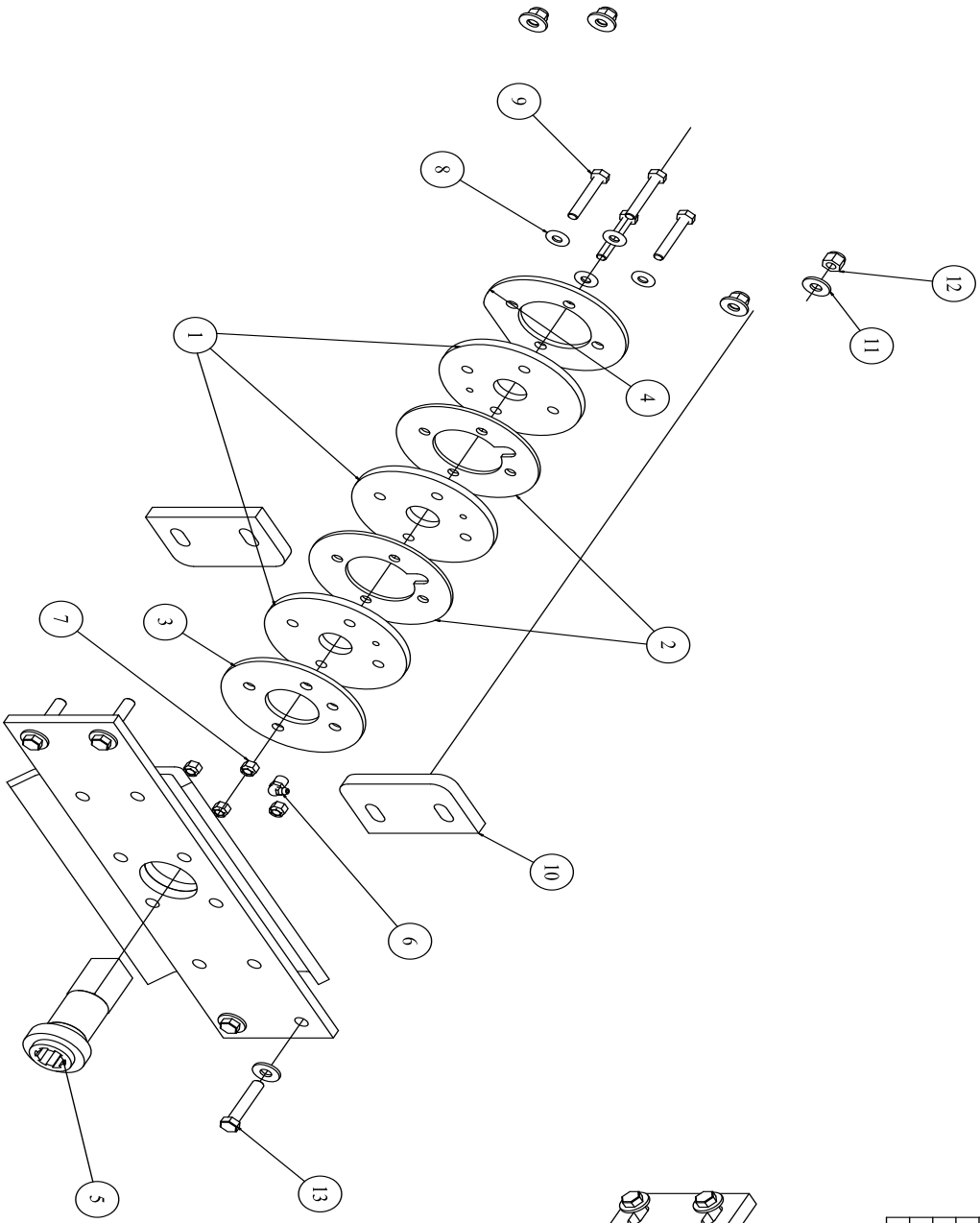


PARTS LIST

ITEM NUMBER	QTY	PART NUMBER	DESCRIPTION
18	4	20-105	Rivets for Name Plates
45	22	09-105	5/16" Flat Washer
46	11	09-204	3/8"-16 Nylon Nut
47	2	09-355	3/8"-16 x 3/4" GR5 Bolt
48	3	09-312	3/8"-16 x 2" GR5 Bolt
49	6	09-102	3/8" Lock Washer
54	1	GP75-A-2	GP75-Engine Hood Assembly
55	1	MH12-8	MH12 Mud Hog-Engine Isolation Plate
56	2	20-103	Hood Hold Down Strap
57	2	20-139	9541K3 10-24 Rubber Bumper
58	4	02-803	2-Piece Vibration Mount Neoprene
59	4	09-314	3/8"-16 x 2 1/2" GR5 Bolt
60	8	09-114	3/8" x 1 1/2" Fender Washer
61	2	09-224	#10-24 Hex Nut
62	2	09-306	5/16"-18 x 3" GR5 Bolt
63	2	09-203	5/16"-18 Nut
64	3	09-202	5/16"-18 Nylon Nut
70	8	09-310	3/8"-16 x 1 1/4" GR5 Bolt
71	2	09-384	1/4"-20 x 7 1/2" GR2 Bolt
72	6	09-104	1/4" Flat Washer
73	4	09-200	1/4"-20 Nylon Nut
74	1	12-115	1 1/2" Blue PVC Layflat Water Discharge Hose
75	1	MH-61	MH 12/20 Battery Hold Down
76	1	03-177	Deka Trac 225 Battery
77	1	09-305	5/16"-18 x 2" GR5 Bolt
78	1	14-103	GX390UT2QAE2 Honda Engine (3 AMP)
79	1	02-514	Pump Adaptor-All MH, GP75, UGPH
80	1	02-515	DPC-GP-F-20-10-P-C Gear Pump GP75-UGPH
81	1	15-101	Maska 5/8" Bore Coupling
82	1	15-102	Maska 1" Bore Coupling
83	1	15-118	Elastomeric Coupling Spider
84	1	02-259	3/4" JICM to 3/4" ORM 4.5 DEG Adaptor
85	1	02-258	1/2" JICM to 5/8" ORM 90 Adaptor
86	1	20-120	Model # HON 1412 Drainziti
87	2	09-322	1/4"-20 x 3/4" GR5 Bolt
88	2	20-152	EZ GROUT Corporation Keychain-HOG
91	1	03-510	1/2" Steel Locknut
93	1	GP75-A-26	GP75 Fuse Holder Assembly
94	1	GP75-A-23	GP75 Female Screw Connector w/3 Connectors
95	1	GP75-A-22	Woodhead Controller w/ Coil Cord & Screw on Connectors
96	1	GP75-A-25	GP75 Wire Harness for Argo Valve
102	1	MH-A-85	MH12/20 Negative Battery Cable 18"
103	1	MH-A-86	MH12/20 Positive Battery Cable 28"
104	1	03-133	1/4" Wire Loom
105	1	03-174	3/8" Polyloom

# SEAL KIT

**Serial #'s GH75021036 and GPH7502153, GPHC7502193 and below all require shims.**



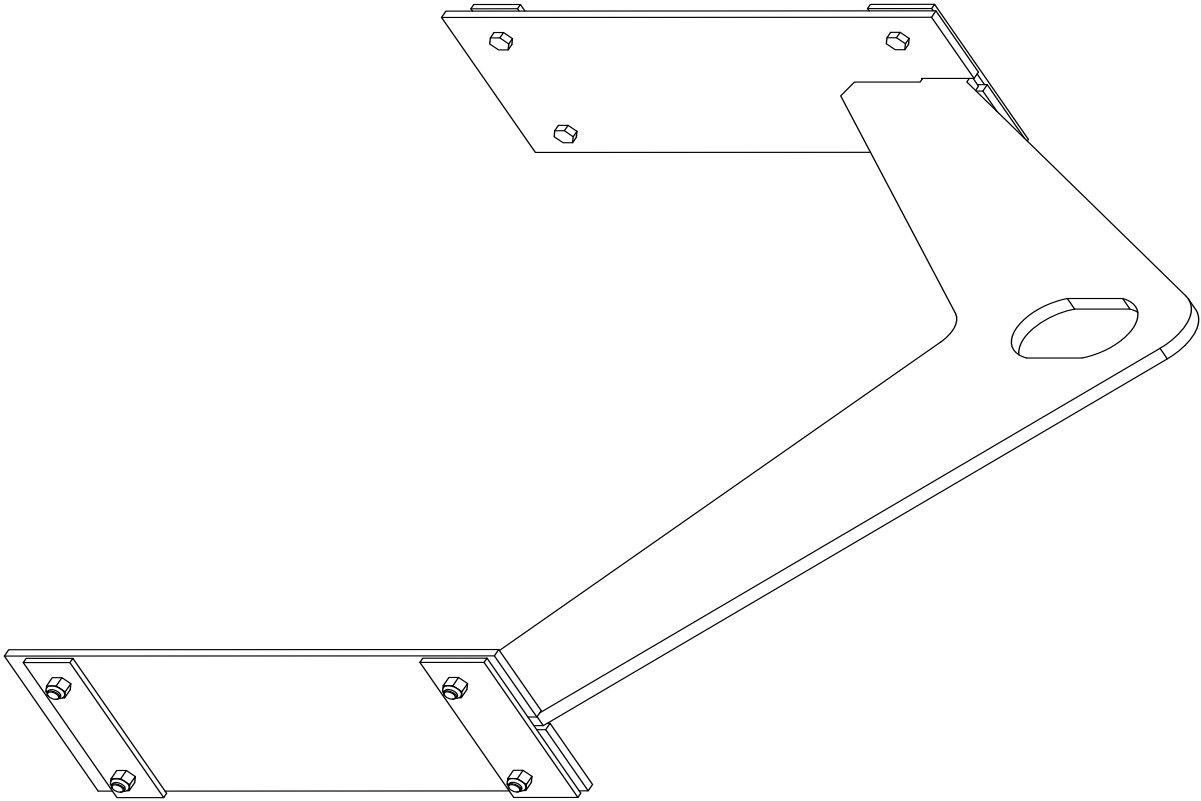
ITEM	QTY	PART NUMBER	DESCRIPTION
1	3	13-116	Grout Hog Urethane Shaft Seals
2	2	GH-17	GH-Rear Seal Intermediate Plate Spacer
3	1	GH-18	GH-Rear Seal Outer Seal Plate
4	1	GH-31	GH-Rear Seal Inner Plate
5	1	GH-A-25	GH-Power Shaft Connector
6	1	09-600	1/8" 90 Deg. Grease Fitting
7	4	09-202	5/16"-18 Nylon Nut
8	4	09-104	1/4" Flat Washer
9	4	09-305	5/16"-18 x 2" GR5 Bolt
10	2	GH-52	Grout Hog-Retrofit Rear Seal Spacer
11	8	09-105	5/16" Flat Washer
12	4	09-204	3/8"-16 Nylon Nut
13	4	09-312	3/8"-16 x 2" GR5 Bolt

**GPH75 & GPHC75 - Seal Kit**

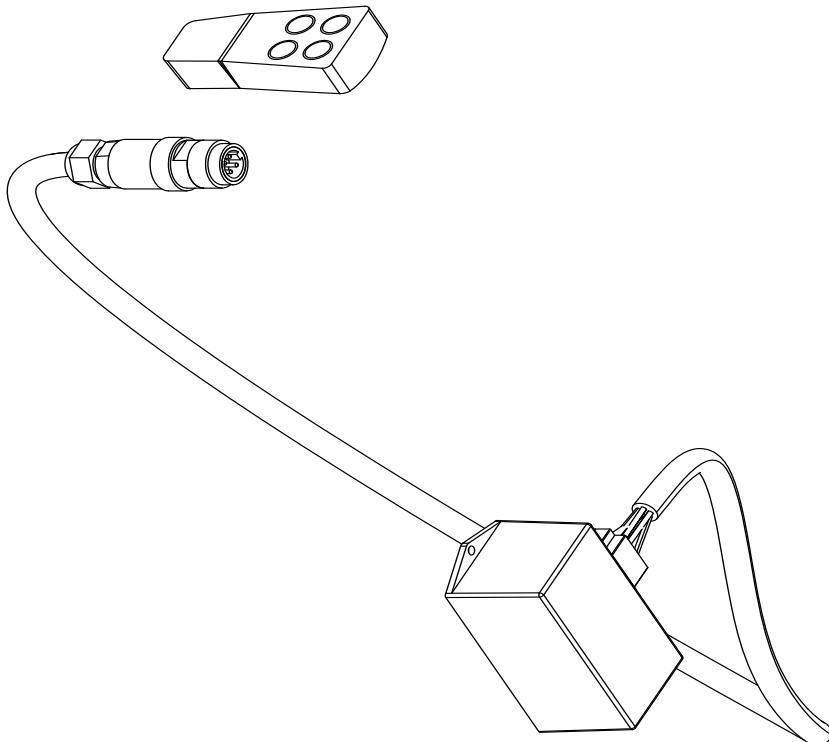
PARTS LIST

# OPTIONS

**GPHC-A-1 (Crane Bale w/Mounting Hardware)**



**GPH-A-30 (GPH Wireless Remote Complete Assembly)**



**GPH75 & GPHC75 GROUT HOG - Options**



# WARRANTY

## Limited Warranty

The manufacturer warrants that products manufactured shall be free from defects in material and workmanship that develop under normal use for a period of one year on all products from the date of shipment. The foregoing shall be the exclusive remedy of the buyer and the exclusive liability of the manufacturer. Our warranty excludes normal replaceable wear items, i.e. gaskets, wear parts, seals, O-rings, belts, drive chains, clutches, etc. Any equipment, part or product which is furnished by the manufacturer but manufactured by another, bears only the warranty given by such other manufacturer. (Manufacturer agrees to furnish free of charge a written description of problem or cause.) Warranty is voided by product abuse, alterations, use of equipment in applications for which it was not intended, use of non-manufacturer parts, or failure to follow documented service instructions. The foregoing warranty is exclusive of all other warranties whether written or oral, expressed or implied. No warranty of merchantability or fitness for a particular purpose shall apply. The agents, dealers, and employees of Manufacturer are not authorized to make modifications to this warranty, or additional warranties binding on the Manufacturer. Therefore, additional statements, whether oral or written, do not constitute warranty and should not be relied upon.

The Manufacturer's sole responsibility for any breach of the foregoing warranty provisions, with respect to any product or part not conforming to the Warranty or the description herein contained, is at its option (a) to repair, replace, or refund such product or parts upon the prepaid return thereof to location designated specifically by the Manufacturer. Product returns not shipped prepaid will be refused (b) as an alternative to the foregoing modes of settlement - the Manufacturer's dealer may repair defective units with reimbursement for expenses. A written description of problem or cause must accompany all warranty claims.

Except as set forth here in above and without limitation of the above, there are no warranties or other affirmation which extend beyond the description of the products on the fact here of, or as to operational efficiency, product reliability, or maintainability or compatibility with products furnished by others. In no event, whether as a result of breach of contract or warranty or alleged negligence, shall the Manufacturer, be liable for special or consequential damages including but not limited to: Loss of profits or revenue, loss of use of the product or any associated product, cost of capital, cost of substitute products, facilities or services or claims of customers. Manufacturer does not assume responsibility for any accident due to equipment modification.

No claim will be allowed for products lost or damaged in transit. Such claims should be filed with the carrier within fifteen days.

Effective July 20, 2005

EZG Manufacturing is the exclusive manufacturer of the patented Grout Hog® Grout Delivery System the Mud Hog® Hydraulic Mixing Station, the Hog Trough® mud pan, the Hog Cart™, the Hog Slopper™, the Booger Hog® Wall Scrubber, the Hog Leg® Wall Brace System, and the Hog Crusher™ Material Recycling System.

## WARRANTY REGISTRATION

Contact:

Company:

Address:

City:

State:

Zip:

Tel:

Fax:

Cell:

Email:

Purchased From:

Direct      Distributor:

Purchase Date:

Serial No.

**Fax Warranty Registration form to 740.962.2037  
or submit online at [www.ezgmfg.com](http://www.ezgmfg.com) by clicking  
on “Products” then “Warranty Cards”.**

PLEASE COMPLETE THIS WARRANTY CARD, AND RETURN  
VIA MAIL, FAX, OR E-MAIL, WITHIN 30 DAYS OF PURCHASE  
TO VALIDATE YOUR MANUFACTURER’S WARRANTY  
FOR ALL EZG MANUFACTURING PRODUCTS.  
WARRANTY PROVISIONS OF THIS MACHINE ARE HANDLED  
DIRECTLY THROUGH THE MANUFACTURER.

EZG MANUFACTURING \* 1833 North Riverview Road, Malta, OH 43758  
PHONE 1-800-417-9272 \* Email: [warranty@ezgmfg.com](mailto:warranty@ezgmfg.com) \* FAX 740-962-2037

# EZ SURVEY

*Please take a minute to fill out the survey below so that we can better serve our customers.*

1. Where did you first hear about EZG Manufacturing?  
(check one)

Masonry Magazine      Website      Newsletter

Masonry Construction      Referral

Other:

2. What influenced you to buy?

Quality      Price      Easy to use      Other

3. Who is your sales representative?

4. Are you satisfied with the customer service you received?

Yes      No

Explain:

5. What other EZG Manufacturing products do you own?

6. Would you like to be featured in our newsletter?

Yes      No

If yes, where can we reach you and what is the best time?

Comments: